

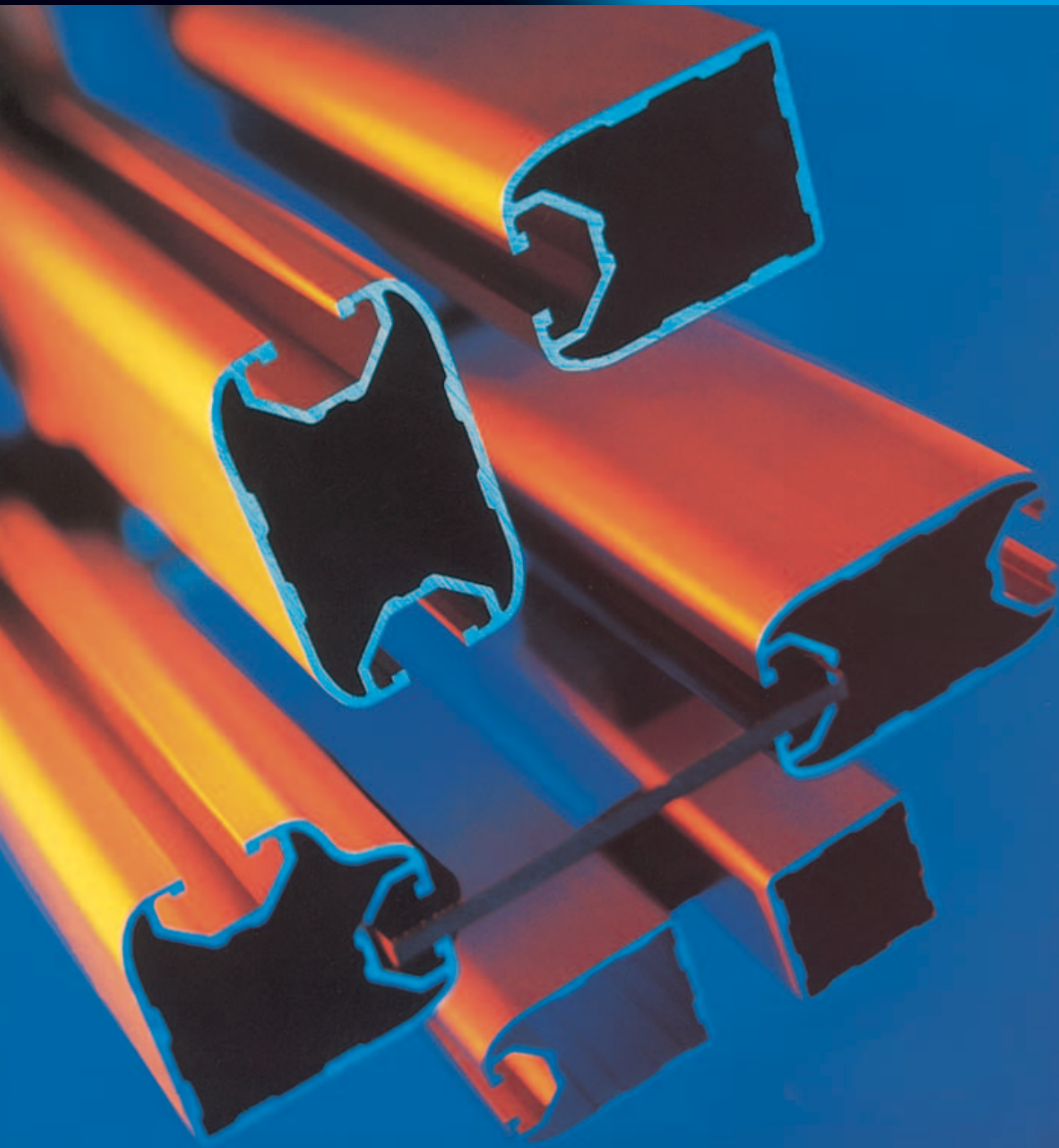


# P1

Structural system

Système structurel

*Sistema strutturale*



# Profili strutturali

La vasta gamma di profili strutturali standardizzati permette di ottimizzare i tempi di progettazione e costruzione delle applicazioni contribuendo a renderle più funzionali ed esteticamente più gradevoli. La produzione di serie garantisce qualità, precisione e costanza di lavorazione. La costruzione con il sistema dei profili strutturali non richiede l'impiego di saldatura e verniciatura. Le realizzazioni possono essere facilmente modificate recuperando il materiale impiegato.

*The wide range of standard strut profiles allows to optimize the time of design and construction by making them more functional and giving them a pleasant look. The quantity production guarantees quality, precision and constancy of work. The construction with the strut profile system does not require any use of welding and varnishing. The articles can be easily modified by recovering their material.*

*La large gamme de profilés d'étagage permet d'optimiser les temps de design et construction en rendant les profilés plus fonctionnels et plus beaux. La production en série garantit qualité, précision e constance dans le travail. La construction des profilés d'étagage n'exige ni de soudages ni de laquages. Les réalisations peuvent être modifiées facilement en récupérant le matériel utilisé.*

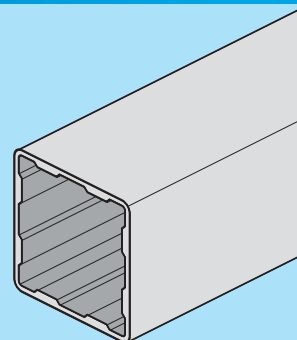
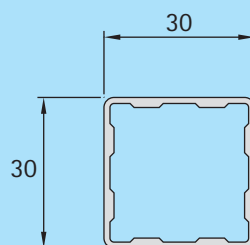
Sigla e numero del materiale secondo ISO <i>Material designation and number according to ISO</i> Dénomination des matériaux et numéro selon ISO	P- Al Mg Si 6060 [UNI 9006/1]	Stato fisico <i>Physical status</i> Etat physique		T5
		Processo d'anodizzazione - spessore <i>Anodizing process - layer thickness</i> Anodisation - Epaisseur de la couche		15 µm
Resistenza minima alla trazione <i>Minimum tensile strength</i> Résistance minimale à la traction	$R_m=195\text{N/mm}^2$	Tolleranza di fabbricazione <i>Dimensional tolerance</i> Tolérance dimensionnelle		DIN 17615
Limite elastico 0,2% <i>0,2 % proof stress</i> Limite d'élasticité'	$R_{p0,2}=145\text{N/mm}^2$	Tolleranza rettilinea <i>Straightness tolerance</i> Tolérance rectiligne		1,5 mm/2m
Modulo d'elasticità <i>Elasticity module</i> Module d'élasticité'	$E=70.000\text{ N/mm}^2$	Tolleranza di torsione <i>Torsional tolerance</i> Tolérance de torsion		1,5 mm/2m

	Momento d'inerzia Moment of inertia Moment d'inertie I [cm <sup>4</sup> ]		Modulo di resistenza Section moduls Moment de résistance W [cm <sup>3</sup> ]		Area Profile area Surface de profilé [mm <sup>2</sup> ]	Peso Weight Poids [Kg/m]	Cava del profilo Profile slot Rainure du profilé [mm]	Codice Code Code	Lunghezza barra Length of bar Longueur de la barre [mm]
	x	y	x	y					
30 x 30	2,2	2,2	1,5	1,5	172,50	0,470	8	PR3030AL	6020
30 x 40	4,29	2,74	2,15	1,83	216,40	0,580	8	PR3040AL	6020
30 x 50	7,42	3,22	2,97	2,15	260,00	0,700	8	PR3050AL	6020
40 x 40	4,84	4,84	2,30	2,30	257,8	0,700	8	PR4040AL	6020

# 1.1 Profili

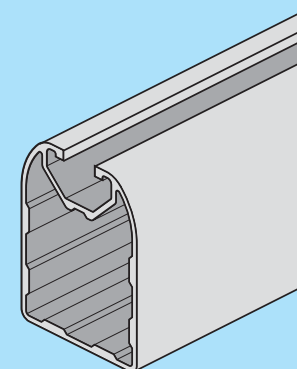
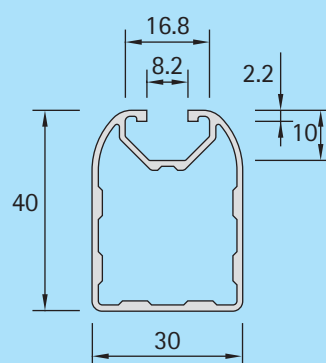
**30 x 30**

Cod PR3030AL



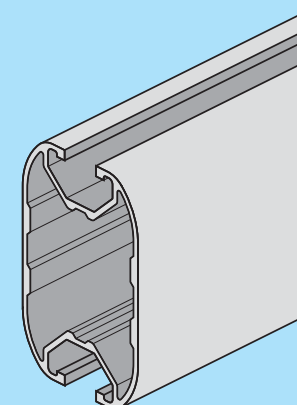
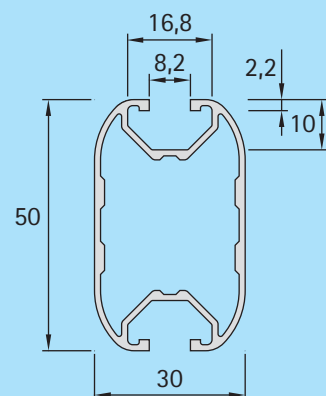
**30 x 40**

Cod PR3040AL



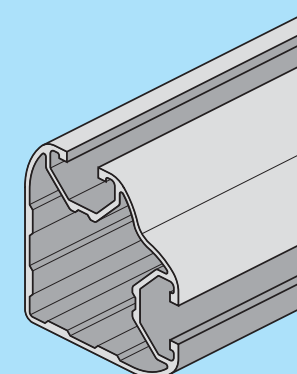
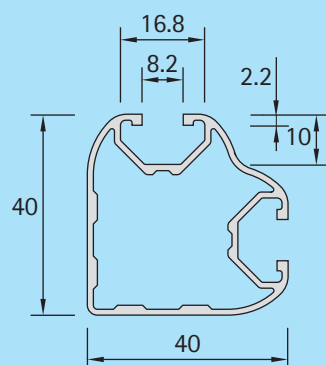
**30 x 50**

Cod PR3050AL



**40 x 40**

Cod PR4040AL

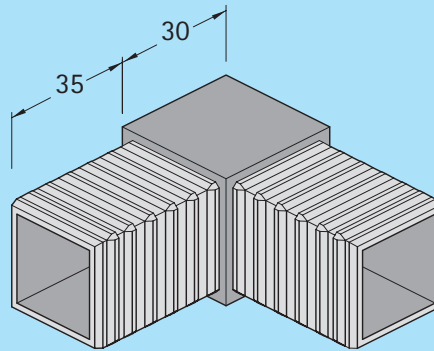


## 2.1 Fissaggi

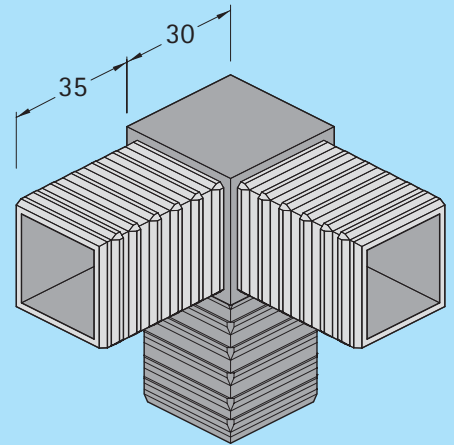
### Giunti angolari

Connectors

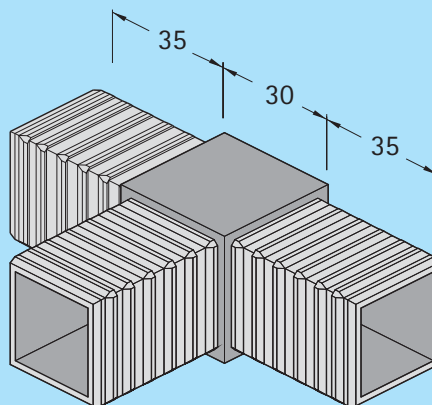
Éléments de liaison



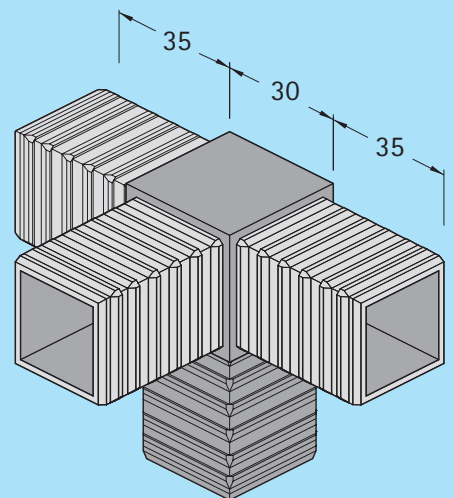
Cod GIAL1L



Cod GIAL2L



Cod GIAL1T



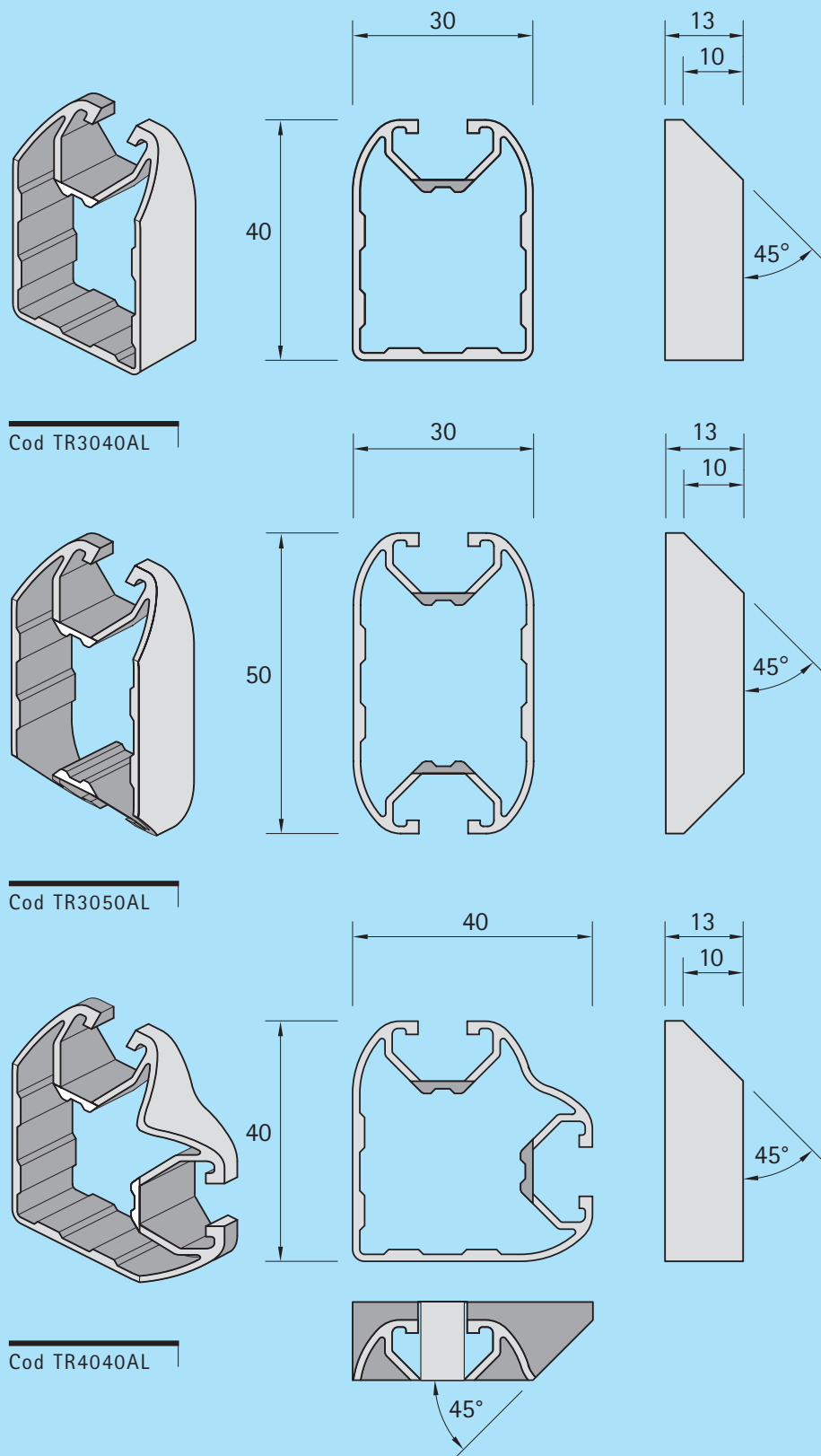
Cod GIAL1T1L

## 2.2 Fissaggi

### Terminali per giunzioni

*End parts for connection*

*Éléments finals pour liaison*



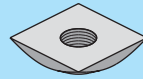
## 2.3 Fissaggi

### Dadi

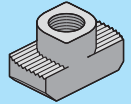
*Nut*

*Ecrou*

M5 Cod DAQ0530  
M6 Cod DAQ0630  
M8 Cod DAQ0830



M5 Cod DAM0530  
M6 Cod DAM0630

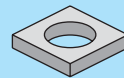


### Rondella

*Washer*

*Rondelle*

Cod R0Q0830



### Inserto filettato

*Thread bush*

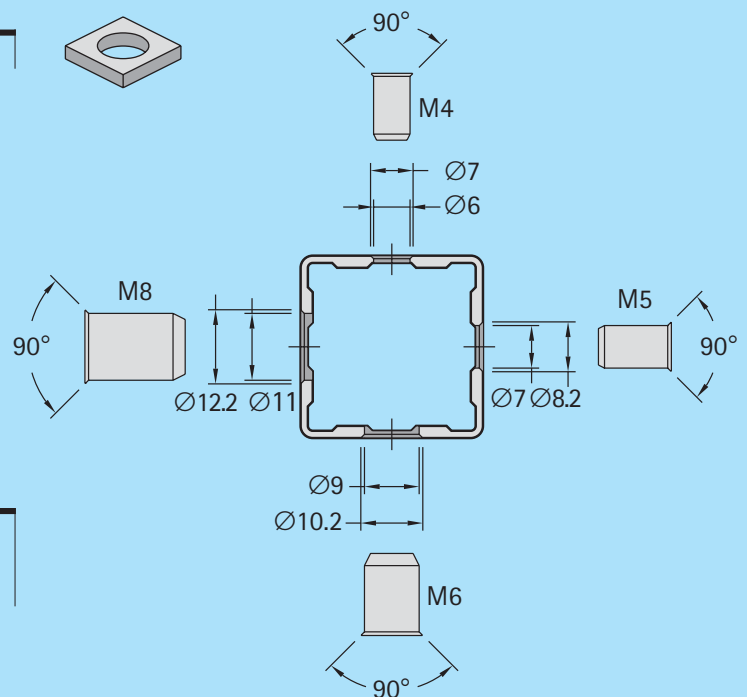
*Insert fileté*

Inserto da applicare con  
specifico strumento

*To be fixed with special tool*

*Application avec utils special*

M4 Cod DAI04  
M5 Cod DAI05  
M6 Cod DAI06  
M8 Cod DAI08

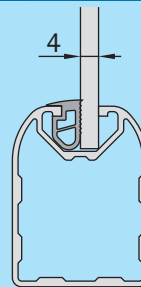


### Guarnizione per pannelli

*Mounting rim profile*

*Profilé d'encadrement*

Cod GUPAL

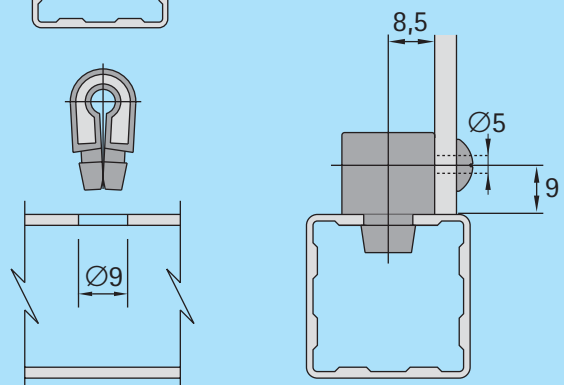


### Blocchetto fissaggio pannelli

*Block for panels*

*Bloc pour  
fixation panneaux*

Cod BFPAL30

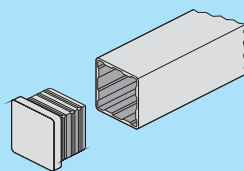
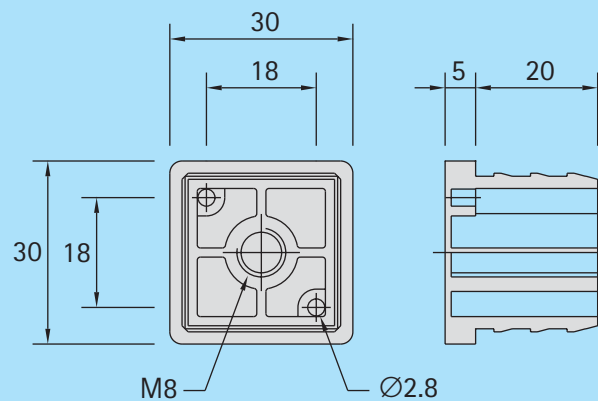


## 2.4 Fissaggi

### Tappo

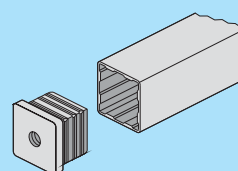
Cover cap

Bouchon



Cod TACAL30

Applicazione  
chiusura profili  
Closed  
Fermeture



Cod TAFAL3008

Applicazione  
fissaggio piedini  
For foot  
Filtre pour pied

### Giunto lineare

Profile connector

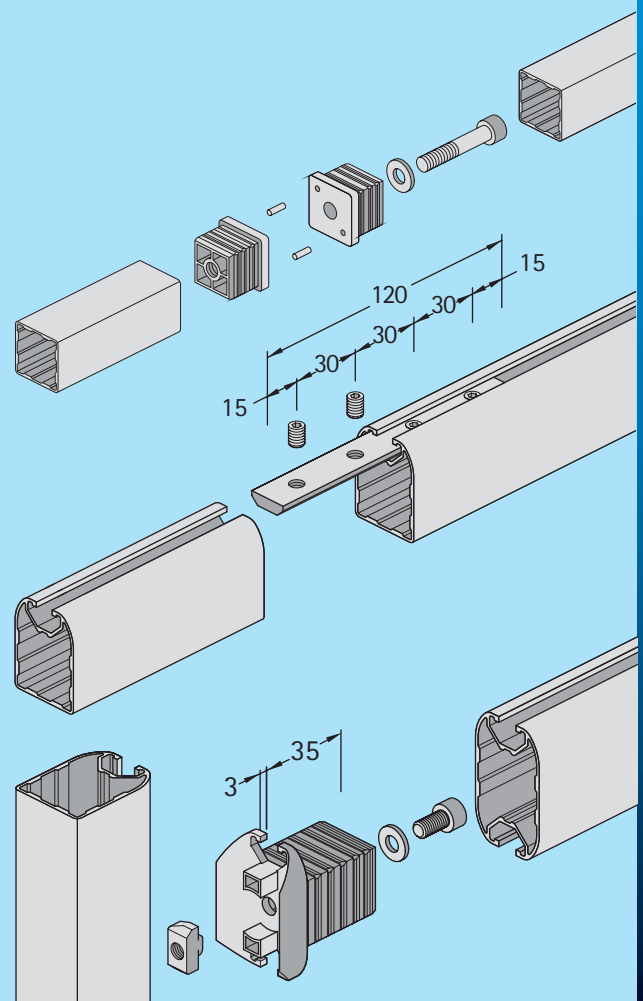
Jonction de profilé

Cod KTAL02

Applicazione  
giunzione profili

Kit for front joint

Kit pour jonction  
frontale



Cod GIL3030

### Kit fissaggio di testa

Kit for front connection

Kit pour liason de tête

Cod KTAL01

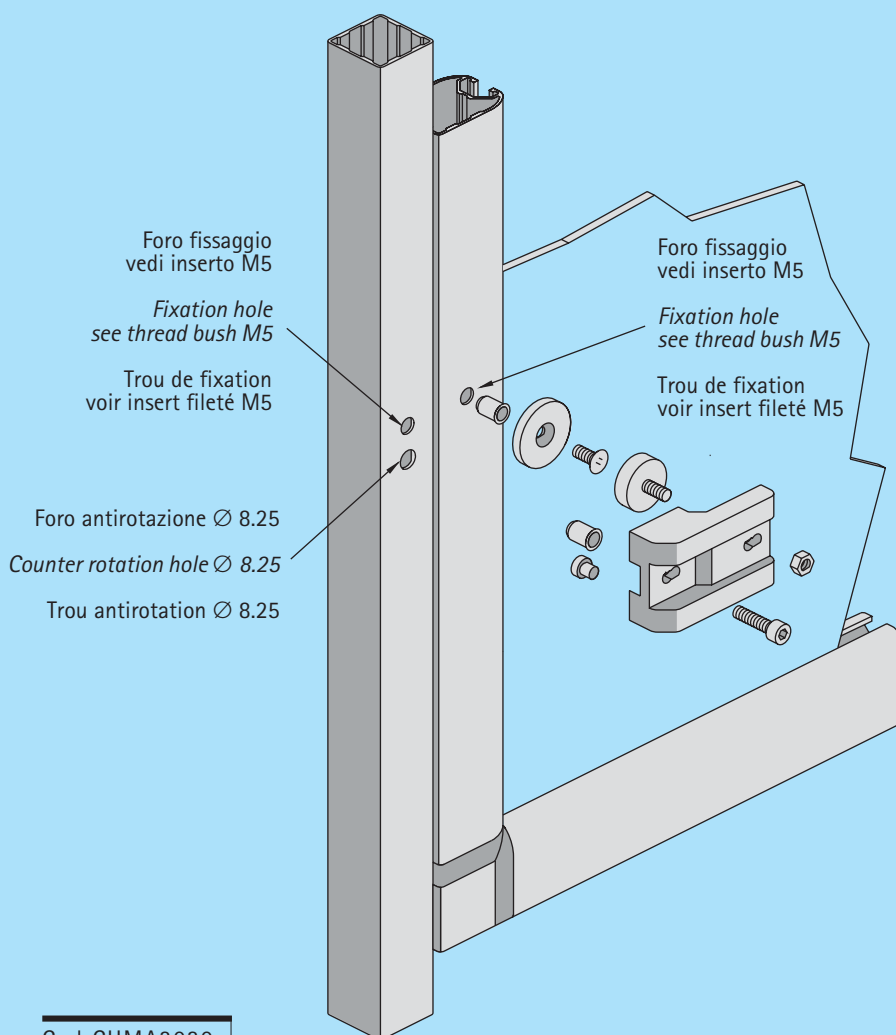
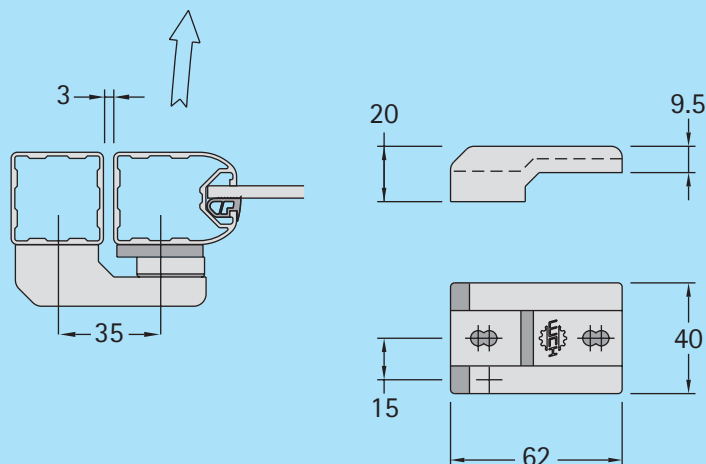


# 3.1 Accessori

## Chiusura magnetica

Magnetic locking

Fermeture magnétique



Fornitura comprensiva di:

- magnete
- staffe di fissaggio
- battuta magnete
- viti e dadi di fissaggio
- inserto filettato

Standard supply:

- magnet
- bracket to fix magnet to the structure
- buffer for the magnet
- clamping screws and nuts
- thread bush

Fourniture di série:

- magnéto
- Equerre pour fixer magnéto à la structure
- feuillure pour le magnéto sur la porte
- vis et écrous de fixation.
- insert fileté

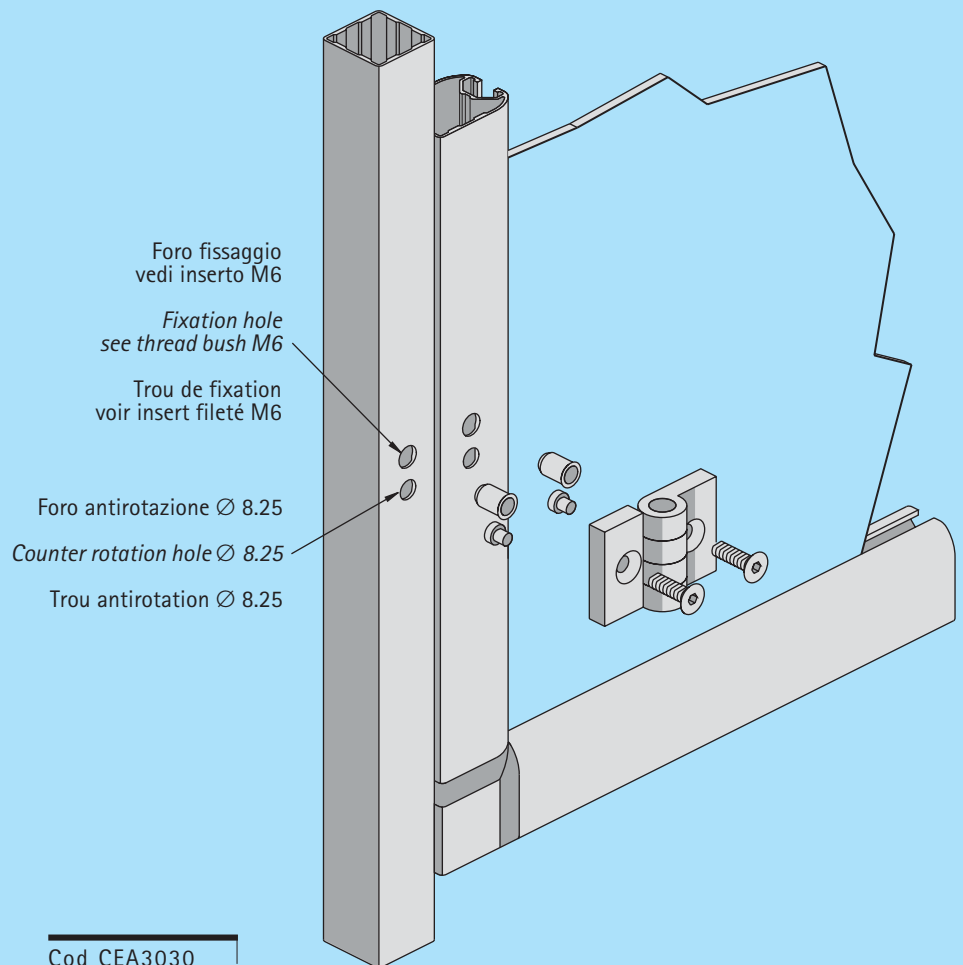
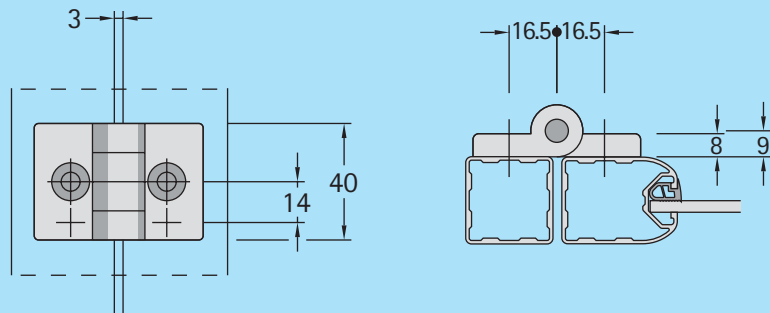


## 3.2 Accessori

### Cerniera in plastica

Plastic hinge

Charnière plastique



#### Fornitura standard

- cerniera
- viti e inserti filettati
- perni antirotazione

#### Standard supply

- hinge
- screws and thread bush
- counter rotation pins

#### Forniture de série

- charnière
- vis et insert fileté
- tourillons anti-rotation

## 3.3 Accessori

### Maniglia

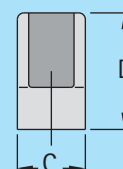
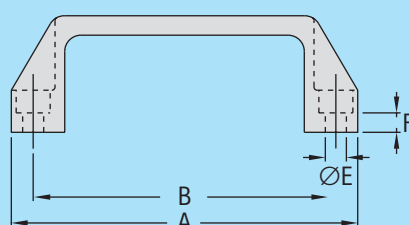
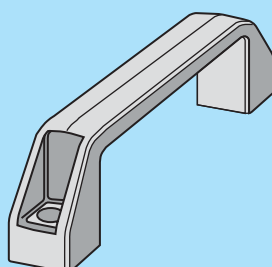
*Strap-shaped handle*

Poignée en forme d'étrier

Viti escluse dalla fornitura.

*Screws not included.*

Vis non comprises.



Cod MA935

A	B	C	D	ØE	F
107	93,5	21	36	Ø6,5	6

Cod MA117

134	117	26	41	Ø8,5	8,5
-----	-----	----	----	------	-----

### Maniglia antinfortunistica

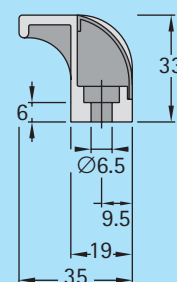
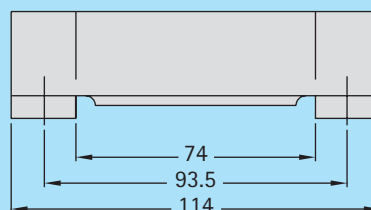
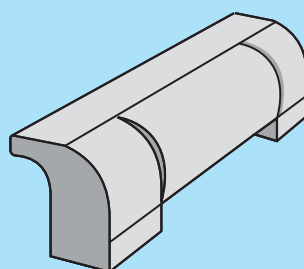
*Strap-shaped handle*

Poignée en forme d'étrier

Viti escluse dalla fornitura.

*Screws not included.*

Vis non comprises.



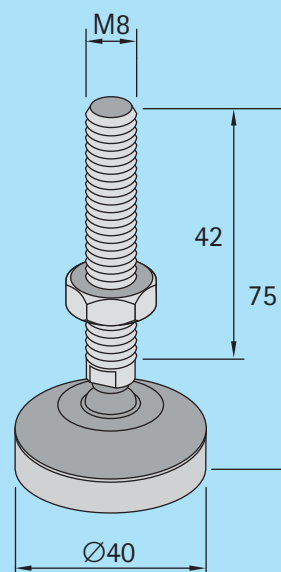
Cod MAA935

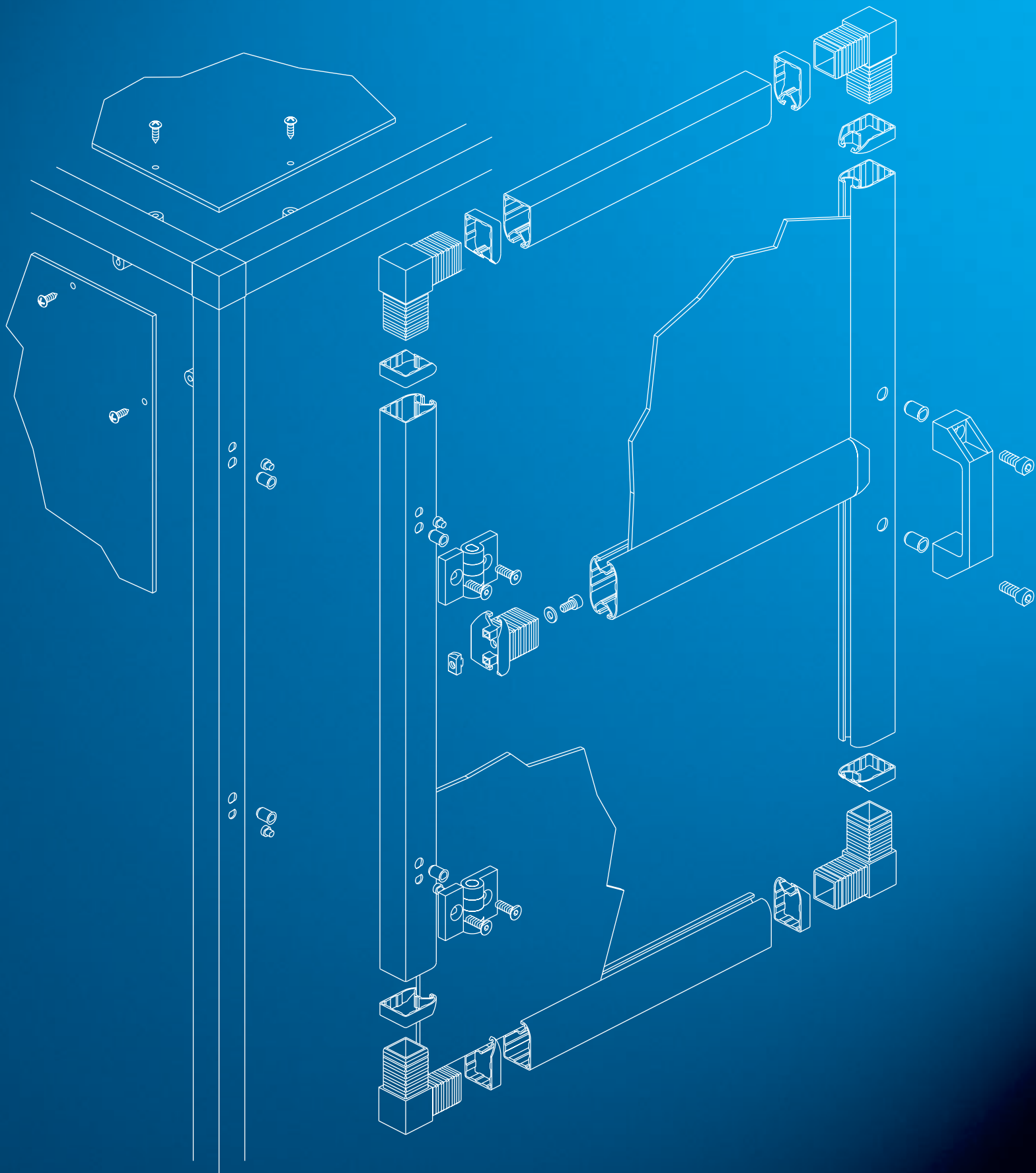
### Piede snodato

*Hinged foot*

Pied articulé

Cod SUP04008







**ELEMENTI STRUTTURALI E  
SISTEMI DI MOVIMENTAZIONE**

---

**MCH srl**

[www.mhs-group.com](http://www.mhs-group.com)  
[mch@mhs-group.com](mailto:mch@mhs-group.com)

Via G. Dalla Chiesa, 74/76  
20037 Paderno Dugnano (MI) - Italy  
tel. +39 02 9919961  
fax +39 02 991996200

company of **MHS GROUP**

Sede operativa: Via G. Dalla Chiesa, 72  
20037 Paderno Dugnano (MI) - Italy