

## Serie Ghilux

 <b>6300</b> Pag. 10.7	 <b>6310</b> Pag. 10.7	 <b>6320</b> Pag. 10.7	 <b>6330</b> Pag. 10.7	 <b>6340</b> Pag. 10.8	 <b>6350</b> Pag. 10.8	 <b>6400</b> Pag. 10.8	 <b>6410</b> Pag. 10.8	 <b>6420</b> Pag. 10.9
 <b>6430</b> Pag. 10.9	 <b>6440</b> Pag. 10.9	 <b>6450</b> Pag. 10.10	 <b>6460</b> Pag. 10.10	 <b>6470</b> Pag. 10.10	 <b>6490</b> Pag. 10.10	 <b>6500</b> Pag. 10.11	 <b>6540</b> Pag. 10.11	 <b>6560</b> Pag. 10.11
 <b>6570</b> Pag. 10.11	 <b>6600</b> Pag. 10.11	 <b>6700</b> Pag. 10.12-10.13	 <b>6710</b> Pag. 10.12-10.13	 <b>6720</b> Pag. 10.12-10.13	 <b>6900</b> Pag. 10.14	 <b>6910</b> Pag. 10.14	 <b>6915</b> Pag. 10.14	 <b>6920</b> Pag. 10.14
 <b>6680</b> Pag. 10.15	 <b>10740</b> Pag. 10.15	 <b>10741</b> Pag. 10.15	 <b>10760</b> Pag. 10.15	 <b>10761</b> Pag. 10.15	 <b>6065</b> Pag. 10.16	 <b>6066</b> Pag. 10.16	 <b>6067</b> Pag. 10.18	 <b>6068</b> Pag. 10.18
 <b>6069</b> Pag. 10.19	 <b>6035</b> Pag. 10.19	 <b>6036</b> Pag. 10.19	 <b>6037</b> Pag. 10.19	 <b>6038</b> Pag. 10.19				

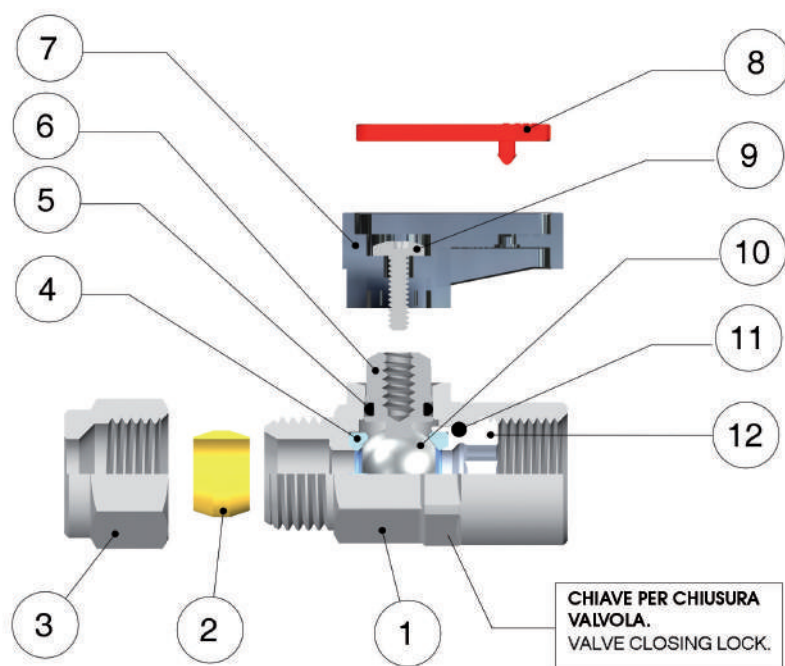


# Serie Ghilux

VALVOLE A SFERA - BALL VALVES





**Caratteristiche Tecniche / Technical Characteristics**


**FKM A RICHIESTA**  
IF REQUESTED FKM

**BS EN 331:1998**

Tested by GL to  
BS EN 331:1998

CHIAVE PER CHIUSURA  
VALVOLA.  
VALVE CLOSING LOCK.

**Materiali e Componenti / Component Parts and Materials**

- |   |   |
|---|---|
| 1 Corpo in Ottone cromato                         | 1 Chrome Nickel-plated Brass Body       |
| 2 Ogiva in Ottone (PTFE a richiesta)              | 2 Brass Olive (if Requested PTFE)       |
| 3 Dado in Ottone cromato                          | 3 Chrome Nickel-plated Brass Nut        |
| 4 Guarnizione sede sfera in PTFE                  | 4 PTFE Seats                            |
| 5 Guarnizione O-RING in NBR 70 (FKM a richiesta)  | 5 NBR 70 Seal O-RING (FKM if required)  |
| 6 Albero in Ottone cromato                        | 6 Chrome Nickel-plated Brass Spindle    |
| 7 Maniglia in PA66 Caricato vetro                 | 7 PA66 Glass reinforced Handle          |
| 8 Piastrina in Resina Acetalica                   | 8 Acetalic resin Plate                  |
| 9 Vite in acciaio                                 | 9 Steel Screw                           |
| 10 Sfera in Ottone cromato                        | 10 Chrome Nickel-plated Brass Ball      |
| 11 Guarnizione O-RING in NBR 70 (FKM a richiesta) | 11 NBR 70 Seal O-RING (FKM if required) |
| 12 Ghiera o raccordo in Ottone                    | 12 Brass Fitting                        |

**Pressioni / Pressures**

Pressione minima / Minimum Pressure: -0.99 bar (-0.099MPa)  
Pressione massima / Maximum pressure: 20 bar (2 MPa)

**Filettature / Threads**

Gas conica conforme ISO 7.1, BS 21, DIN 2999  
Tapered gas in conformity with ISO 7.1, BS 21, DIN 2999.  
Gas cilindrica conforme ISO 228 Classe A  
Parallel gas in conformity with ISO 228 Class A.

**Tubi di collegamento / Connection Tubes**

Tubi in rame, tubi metallici in genere, raccorderia varia.  
PA6, PA11, PA12, Polietilene, \*Poliuretano, PTFE, FEP utilizzando  
l'apposita bussolina di rinforzo (art. 10770).  
\*Per tubi in Poliuretano é consigliata una durezza di 98 shore.

Tubes made in copper, metal in general and various fittings.  
PA6, PA11, PA12, Polyethylene, \*Polyurethane, PTFE, FEP with  
an inside support bush art 10770.  
\*For Polyurethane hoses it is required a minimum hardness of  
98 shore.

**Temperature / Temperatures**

Temperatura minima / Minimum temperature: -20 °C  
Temperatura massima / Maximum temperature: +80 °C

Con Guarnizioni FKM / With FKM Seals

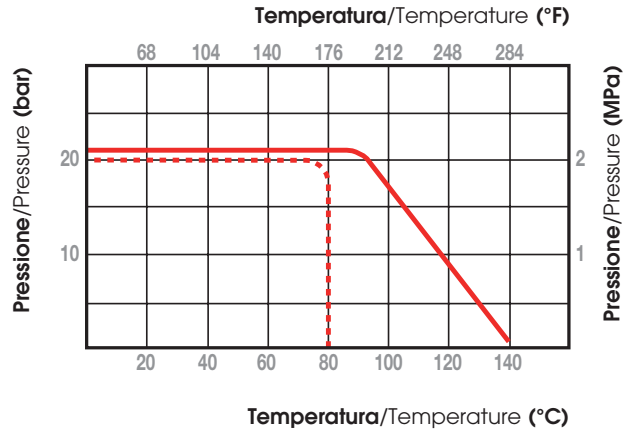
Temperatura minima / Minimum temperature: -15 °C  
Temperatura massima / Maximum temperature: +130 °C

**Fluidi compatibili / Fluids**

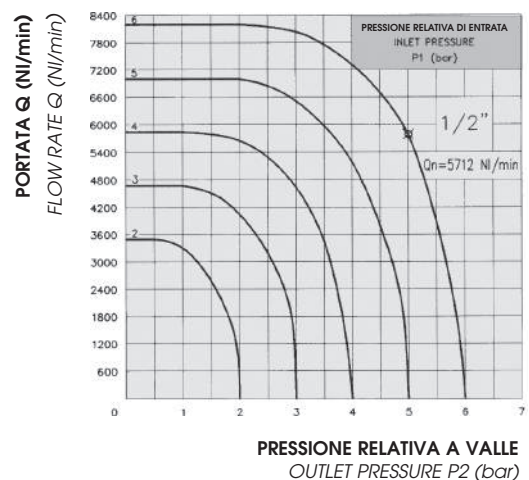
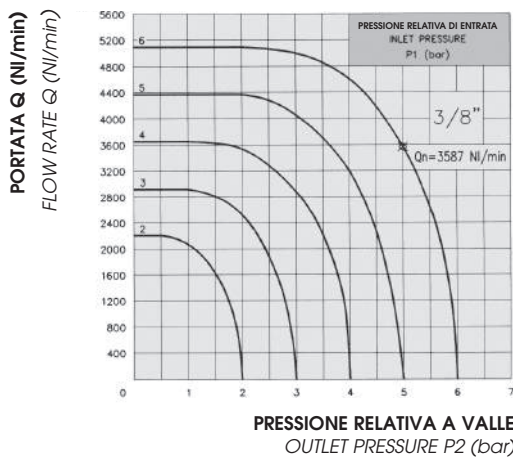
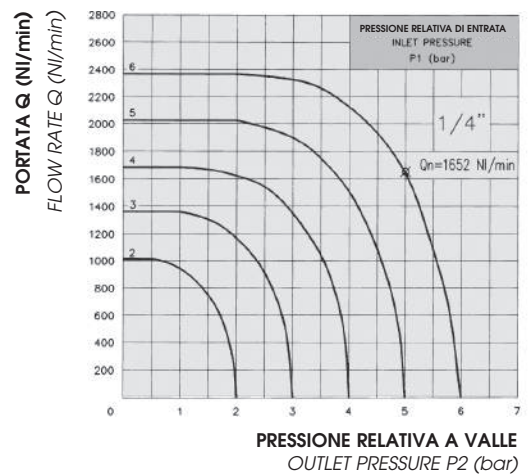
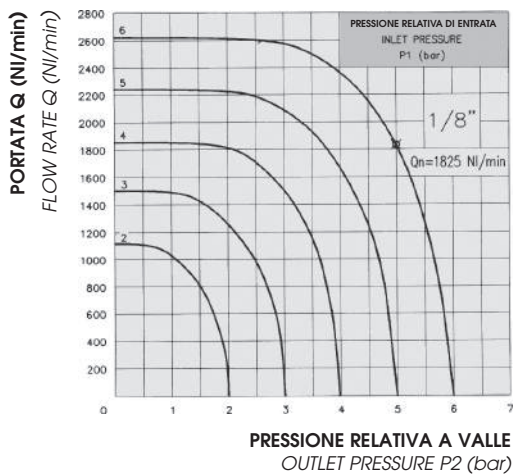
Aria compressa, acqua, oli.  
\*1° e 2° famiglia di gas a media pressione.  
3° famiglia di gas a bassa pressione.  
Compressed air, water, oils.  
\*1st and 2nd family gases at medium pressure.  
3rd family gases at low pressure.

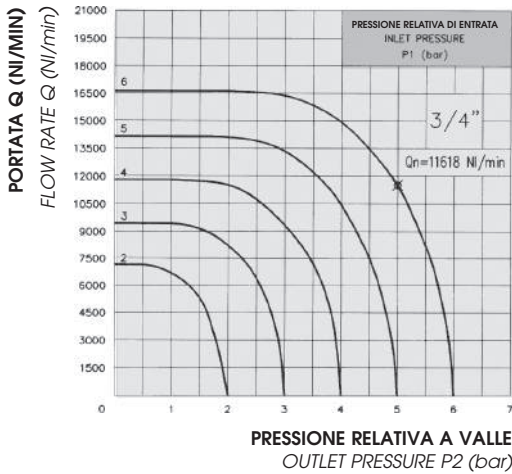
**DIAGRAMMA PRESSIONE-TEMPERATURA**  
 PRESSURE-TEMPERATURE RATINGS DIAGRAM

- PTFE + NBR
- PTFE + FKM



**CURVE CARATTERISTICHE DI FLUSSO PER ARIA**  
 RELATIVE ALLE VALVOLE A SFERA GHILUX ART. 6400 FEMMINA-FEMMINA  
 CHARACTERISTIC CURVES OF FLOW FOR AIR  
 PERTINENT TO THE BALL VALVES GHILUX ART. 6400 FEMALE-FEMALE





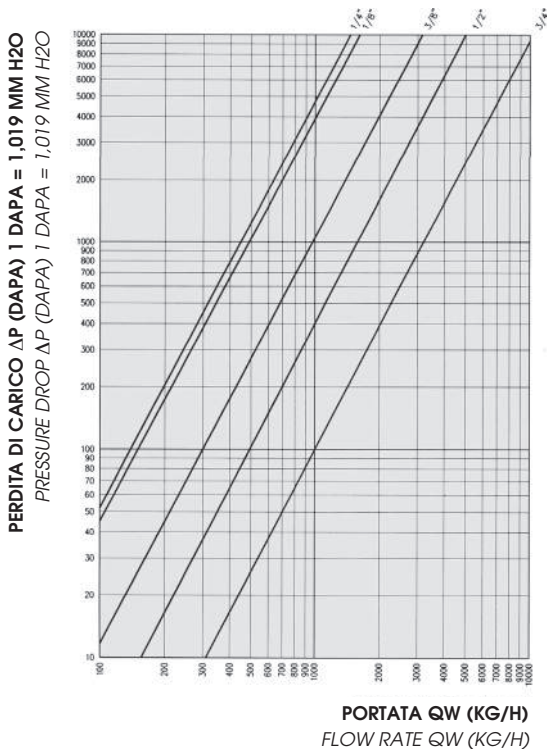
Sui vari diagrammi é evidenziato il valore di  $Q_n$  relativo ad una pressione  $P_1 = 6$  bar e ad una pressione  $P_2 = 5$  bar.

On the different diagrams is marked the value of flow rate  $Q_n$  pertinent to a pressure  $P_1 = 6$  bar and to a pressure  $P_2 = 5$  bar.

CERTIFICATO DI PROVA N° 36794 RILASCIATO DALL' "ISTITUTO GIORDANO" IN DATA 13/06/1990.

TEST CERTIFICATE N° 36794 ISSUED BY THE "ISTITUTO GIORDANO" ON THE 13/06/1990.

**DIAGRAMMA DELLA CARATTERISTICA PORTATA-PERDITA DI CARICO RELATIVO ALLE VALVOLE A SFERA GHILUX ART. 6400 FEMMINA-FEMMINA PER ACQUA**  
*DIAGRAM OF THE FLOW RATE AND PRESSURE DROP CHARACTERISTICS PERTINENT TO THE BALL VALVES GHILUX ART. 6400 FEMALE-FEMALE FOR WATER*



**COEFFICIENTI DI PORTATA Kv**  
*FLOW RATE FACTORS Kv*

Riportiamo in tabella il coefficiente di portata  $K_v$  delle valvole a sfera GHILUX, ricordando che tale coefficiente rappresenta la quantità d'acqua che attraversa la valvola nell'unità di tempo (Kg/h) alla temperatura di 15.5° C e che determina una caduta di pressione unitaria.

On the following table we specify the flow rate factor  $K_v$  of the ball valves GHILUX, we remind You that this factor represent the quantity of water that cross the valve in the unit time (Kg/h) at the temperature of 15.5° C and it determines a drop of unitary pressure.

Misura Size	Coefficiente di Portata Idraulica Factor of hydraulic flow rate $K_v$ (Kg/h)
1/8"	1614
1/4"	1461
3/8"	3164
1/2"	5051
3/4"	10274

CERTIFICATO DI PROVA N. 36547  
 TEST CERTIFICATE N. 36547

RILASCIATO DALL' "ISTITUTO GIORDANO" IN DATA 31/05/1990  
 ISSUED BY THE "ISTITUTO GIORDANO" ON THE 31/05/199

## COME ORDINARE

Le valvole a sfera standard della serie GHILUX prevedono:

- Trattamento superficiale di CROMATURA
- Ogiva in OTTONE
- Maniglia CORTA
- Piastrina ROSSA

Gli articoli standard possono essere ordinati specificando solo CODICE, MISURA, QUANTITA'.

Ogni variazione allo standard deve essere specificata sull'ordine mediante una descrizione (es. Maniglia Lunga, Piastrina Verde, ecc.).

## HOW TO ORDER

The ball valves GHILUX series are supplied with:

- Surface treatment of CHROME-NICKEL PLATED
- BRASS Olive
- SHORT Handle
- RED Plate

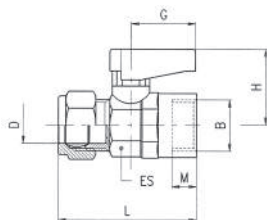
To order the standard items simply specify the ARTICLE CODE, SIZE and QUANTITY.

Every kind of changes must be specified on the order using a description (ex. LONG handle, GREEN plate, etc.).

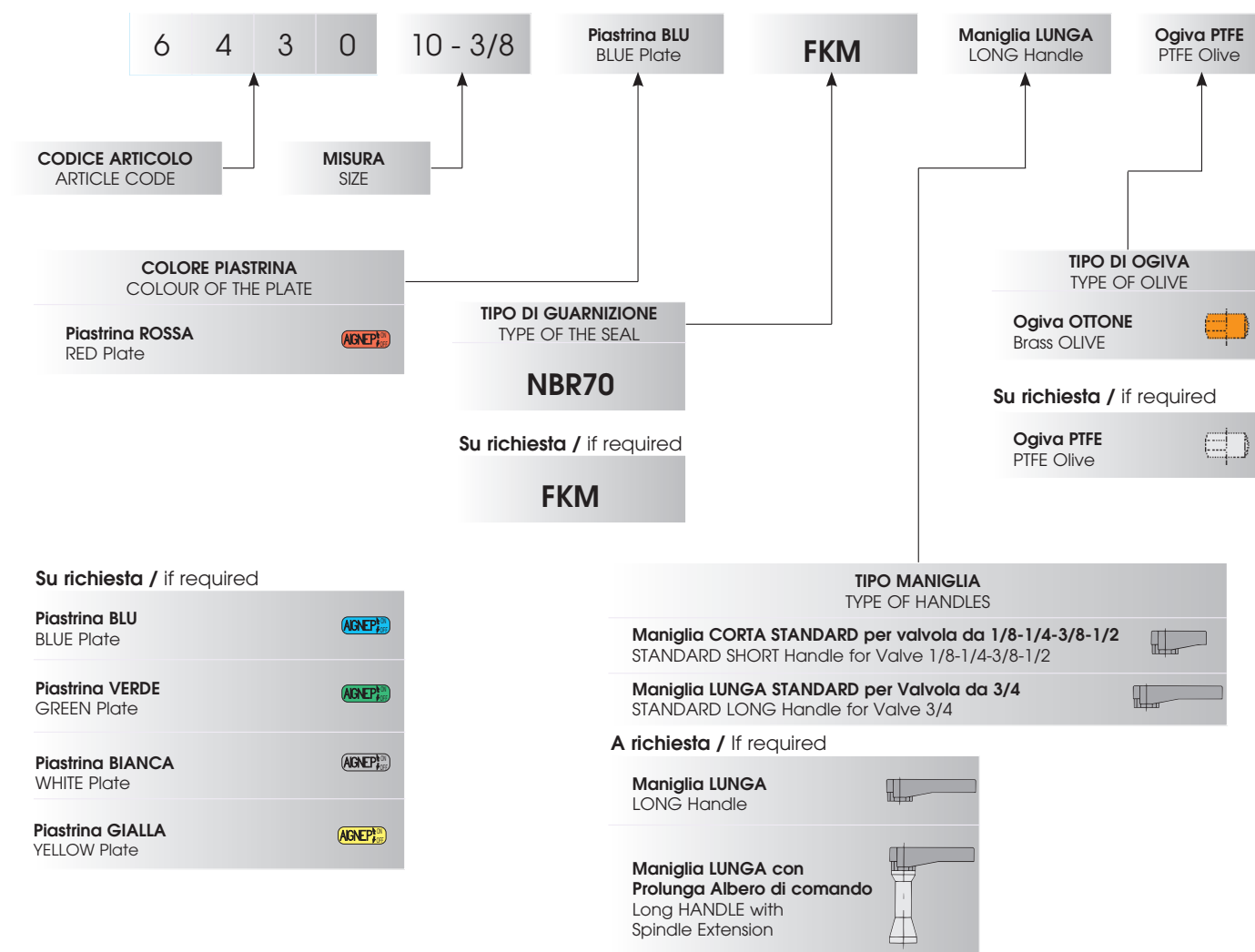
# 6430

VALVOLA TUBO - FEMMINA G ISO 228 (MANIGLIA STANDARD - PIASTRINA ROSSA)

TUBE - FEMALE G ISO 228 VALVE (STANDARD HANDLE - RED PLATE)

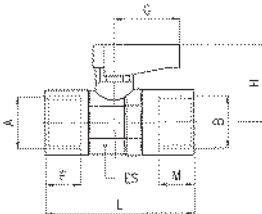


Codice Code	D	B	DN	ES	M	L	G	H	Conf. Pack.
0643000001	6	1/8	5.5	14-15	7	41	19	21	25
0643000002	8	1/8	5.5	14-15	7	43	19	21	25
0643000003	8	1/4	5.5	14-15	8	43	19	21	25
0643000004	10	3/8	8	18-19	9	48	19	22	10
0643000005	12	3/8	8	18-19	9	49	19	22	10
0643000006	14	1/2	10	22-23	10	55.5	26	30.5	10
0643000007	15	1/2	10	22-23	10	55.5	26	30.5	10
0643000098	16	3/4	14	28-30	12	63.5	50	33	5
0643000099	18	3/4	14	28-30	12	63.5	50	33	5



# 6300

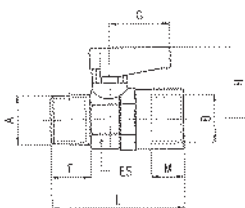
**VALVOLA FEMMINA RP ISO 7 - FEMMINA RP ISO 7 (MANIGLIA STANDARD - PIASTRINA ROSSA)**  
 FEMALE RP ISO 7 - FEMALE RP ISO 7 VALVE (STANDARD HANDLE - RED PLATE)



Codice Code	A	B	DN	ES	F	M	L	G	H	Conf. Pack.
063000001	1/8	1/8	5.5	14-15	7.4	7.4	36	19	21	25
063000002	1/4	1/4	5.5	14-15	11	11	43	19	21	25
063000003	3/8	3/8	8	18-19	11.4	11.4	47	19	22	10
063000004	1/2	1/2	10	22-23	15	15	59	26	30.5	10
063000005	3/4	3/4	14	28-30	16.3	16.3	67	50	33	5

# 6310

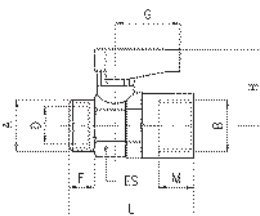
**VALVOLA MASCHIO CONICO R ISO 7 - FEMMINA RP ISO 7 (MANIGLIA STANDARD - PIASTRINA ROSSA)**  
 TAPER MALE R ISO 7 - FEMALE RP ISO 7 VALVE (STANDARD HANDLE - RED PLATE)



Codice Code	A	B	DN	ES	F	M	L	G	H	Conf. Pack.
063100001	1/8	1/8	5.5	14-15	7.4	7.4	36	19	21	25
063100002	1/4	1/8	5.5	14-15	11	7.4	40.5	19	21	25
063100003	1/4	1/4	5.5	14-15	11	11	43	19	21	25
063100004	3/8	3/8	8	18-19	11.4	11.4	46	19	22	10
063100005	1/2	1/2	10	22-23	15	15	57	26	30.5	10
063100006	3/4	3/4	14	28-30	16.3	16.3	63	50	33	5

# 6320

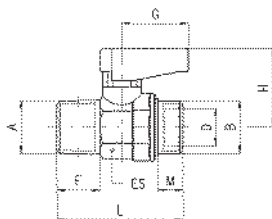
**VALVOLA MASCHIO CILINDRICO GA ISO 228 - FEMMINA RP ISO 7 (MANIGLIA STANDARD - PIASTRINA ROSSA)**  
 PARALLEL MALE GA ISO 228 - FEMALE RP ISO 7 VALVE (STANDARD HANDLE - RED PLATE)



Codice Code	A	B	DN	ES	D	F	M	L	G	H	Conf. Pack.
063200001	1/8	1/8	5.5	14-15	6.2	7	7.4	34.5	19	21	25
063200002	1/4	1/8	5.5	14-15	8.2	8	7.4	35.5	19	21	25
063200003	1/4	1/4	5.5	14-15	8.2	8	11	38	19	21	25
063200004	3/8	3/8	8	18-19	10.2	9	11.4	41.5	19	22	10
063200005	1/2	1/2	10	22-23	15.2	10	15	50	26	30.5	10
063200006	3/4	3/4	14	28-30	18.2	12	16.3	56.5	50	33	5

# 6330

**VALVOLA MASCHIO CONICO R ISO 7 - MASCHIO CILINDRICO GA ISO 228 (MANIGLIA STANDARD - PIASTRINA ROSSA)**  
 TAPER MALE R ISO 7 - PARALLEL MALE GA ISO 228 VALVE (STANDARD HANDLE - RED PLATE)

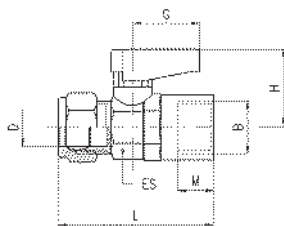


Codice Code	A	B	DN	ES	D	F	M	L	G	H	Conf. Pack.
063300001	1/8	1/8	5.5	14-15	6.2	7.4	7	33.5	19	21	25
063300002	1/8	1/4	5.5	14-15	8.2	7.4	8	33.5	19	21	25
063300003	1/4	1/8	5.5	14-15	6.2	11	7	38	19	21	25
063300004	1/4	1/4	5.5	14-15	8.2	11	8	38	19	21	25
063300005	3/8	3/8	8	18-19	10.2	11.4	9	41.5	19	22	10
063300006	1/2	1/2	10	22-23	15.2	15	10	49	26	30.5	10
063300007	3/4	3/4	14	28-30	18.2	16.3	12	55.5	50	33	5



# 6340

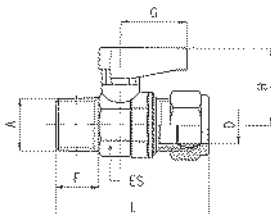
VALVOLA TUBO - FEMMINA RP ISO 7 (MANIGLIA STANDARD - PIASTRINA ROSSA)  
TUBE - FEMALE RP ISO 7 VALVE (STANDARD HANDLE - RED PLATE)



Codice Code	D	B	DN	ES	M	L	G	H	Conf. Pack.
0634000001	6	1/8	5.5	14-15	7.4	41.5	19	21	25
0634000002	8	1/8	5.5	14-15	7.4	43	19	21	25
0634000003	8	1/4	5.5	14-15	11	46	19	21	25
0634000004	10	3/8	8	18-19	11.4	50.5	19	22	10
0634000005	12	3/8	8	18-19	11.4	51.5	19	22	10
0634000006	14	1/2	10	22-23	15	61.5	26	30.5	10
0634000007	15	1/2	10	22-23	15	61.5	26	30.5	10
0634000098	16	3/4	14	28-30	16.3	68	50	33	5
0634000099	18	3/4	14	28-30	16.3	68	50	33	5

# 6350

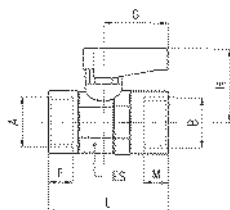
VALVOLA MASCHIO CONICO R ISO 7 - TUBO (MANIGLIA STANDARD - PIASTRINA ROSSA)  
TAPER MALE R ISO 7 - TUBE VALVE (STANDARD HANDLE - RED PLATE)



Codice Code	A	D	DN	ES	F	L	G	H	Conf. Pack.
0635000001	1/8	6	5.5	14-15	7.4	40.5	19	21	25
0635000002	1/8	8	5.5	14-15	7.4	41.5	19	21	25
0635000003	1/4	6	5.5	14-15	11	46	19	21	25
0635000004	1/4	8	5.5	14-15	11	45	19	21	25
0635000005	3/8	10	8	18-19	11.4	50.5	19	22	10
0635000006	3/8	12	8	18-19	11.4	51.5	19	22	10
0635000007	1/2	14	10	22-23	15	59.5	26	30.5	10
0635000008	1/2	15	10	22-23	15	59.5	26	30.5	10
0635000109	3/4	16	14	28-30	16.3	67	50	33	5
0635000110	3/4	18	14	28-30	16.3	67	50	33	5

# 6400

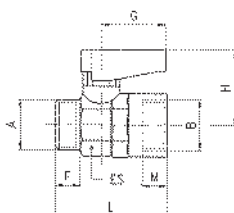
VALVOLA FEMMINA G ISO 228 - FEMMINA G ISO 228 (MANIGLIA STANDARD - PIASTRINA ROSSA)  
FEMALE G ISO 228 - FEMALE G ISO 228 VALVE (STANDARD HANDLE - RED PLATE)



Codice Code	A	B	DN	ES	F	M	L	G	H	Conf. Pack.
0640000001	1/8	1/8	5.5	14-15	7	7	35	19	21	25
0640000002	1/4	1/4	5.5	14-15	8	8	37	19	21	25
0640000003	3/8	3/8	8	18-19	9	9	42	19	22	10
0640000004	1/2	1/2	10	22-23	10	10	49	26	30.5	10
0640000055	3/4	3/4	14	28-30	12	12	58	50	33	5

# 6410

VALVOLA MASCHIO CILINDRICO GA ISO 228 - FEMMINA G ISO 228 (MANIGLIA STANDARD - PIASTRINA ROSSA)  
PARALLEL MALE GA ISO 228 - FEMALE G ISO 228 VALVE (STANDARD HANDLE - RED PLATE)

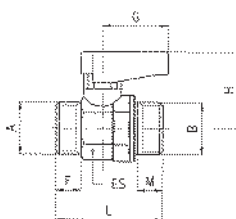


Codice Code	A	B	DN	ES	F	M	L	G	H	Conf. Pack.
0641000001	1/8	1/8	5.5	14-15	7	7	34	19	21	25
0641000002	1/4	1/8	5.5	14-15	8	7	35	19	21	25
0641000003	1/4	1/4	5.5	14-15	8	8	35	19	21	25
0641000004	3/8	3/8	8	18-19	9	9	39	19	22	10
0641000005	1/2	1/2	10	22-23	10	10	45	26	30.5	10
0641000066	3/4	3/4	14	28-30	12	12	52	50	33	5



# 6420

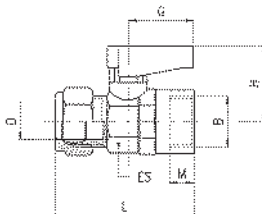
VALVOLA MASCHIO CILINDRICO GA ISO 228 - MASCHIO CILINDRICO GA ISO 228 (MANIGLIA STANDARD - PIASTRINA ROSSA)  
PARALLEL MALE GA ISO 228 - PARALLEL MALE GA ISO 228 VALVE (STANDARD HANDLE - RED PLATE)



Codice Code	A	B	DN	ES	F	M	L	G	H	Conf. Pack.
0642000001	1/8	1/8	5.5	14-15	7	7	32	19	21	25
0642000002	1/8	1/4	5.5	14-15	7	8	32	19	21	25
0642000003	1/4	1/4	5.5	14-15	8	8	33	19	21	25
0642000004	3/8	1/4	5.5	14-15	9	8	33	19	21	25
0642000005	3/8	3/8	8	18-19	9	9	37	19	22	10
0642000006	1/2	3/8	8	18-19	10	9	37	19	22	10
0642000007	1/2	1/2	10	22-23	10	10	42	26	30.5	10
0642000008	3/4	1/2	10	22-23	12	10	42	50	30.5	10
0642000009	3/4	3/4	14	28-30	12	12	49	50	33	5

# 6430

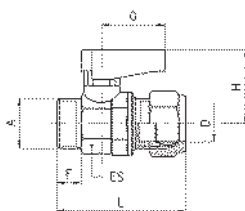
VALVOLA TUBO - FEMMINA G ISO 228 (MANIGLIA STANDARD - PIASTRINA ROSSA)  
TUBE - FEMALE G ISO 228 VALVE (STANDARD HANDLE - RED PLATE)



Codice Code	D	B	DN	ES	M	L	G	H	Conf. Pack.
0643000001	6	1/8	5.5	14-15	7	41	19	21	25
0643000002	8	1/8	5.5	14-15	7	43	19	21	25
0643000003	8	1/4	5.5	14-15	8	43	19	21	25
0643000004	10	3/8	8	18-19	9	48	19	22	10
0643000005	12	3/8	8	18-19	9	49	19	22	10
0643000006	14	1/2	10	22-23	10	55.5	26	30.5	10
0643000007	15	1/2	10	22-23	10	55.5	26	30.5	10
0643000008	16	3/4	14	28-30	12	63.5	50	33	5
0643000009	18	3/4	14	28-30	12	63.5	50	33	5

# 6440

VALVOLA MASCHIO CILINDRICO GA ISO 228 - TUBO (MANIGLIA STANDARD - PIASTRINA ROSSA)  
PARALLEL MALE GA ISO 228 - TUBE VALVE (STANDARD HANDLE - RED PLATE)



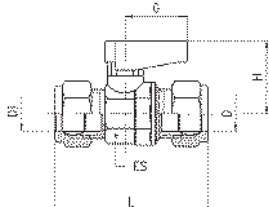
Codice Code	A	D	DN	ES	F	L	G	H	Conf. Pack.
0644000001	1/8	6	5.5	14-15	7	39	19	21	25
0644000002	1/8	8	5.5	14-15	7	40	19	21	25
0644000003	1/4	6	5.5	14-15	8	40	19	21	25
0644000004	1/4	8	5.5	14-15	8	41	19	21	25
0644000005	1/4	10	5.5	14-15	8	44	19	21	25
0644000006	3/8	8	5.5	14-15	9	43	19	21	25
0644000007	3/8	10	8	18-19	9	46	19	22	10
0644000008	3/8	12	8	18-19	9	47	19	22	10
0644000009	3/8	14	8	18-19	9	50.5	19	22	10
0644000010	3/8	15	8	18-19	9	50.5	19	22	10
0644000011	1/2	10	8	18-19	10	49	19	22	10
0644000012	1/2	12	8	18-19	10	50	19	22	10
0644000013	1/2	14	10	22-23	10	52.5	26	30.5	10
0644000014	1/2	15	10	22-23	10	52.5	26	30.5	10
0644000015	3/4	14	10	22-23	12	56.5	26	30.5	10
0644000016	3/4	15	10	22-23	12	56.5	26	30.5	10
0644000197	3/4	16	14	28-30	12	60.5	50	33	5
0644000198	3/4	18	14	28-30	12	60.5	50	33	5

• Nelle misure 1/4-8, 1/4-10, 3/8-14, 3/8-15 il dado, il bicono e il filetto A sono all'opposto della figura.

• In the sizes 1/4-8, 1/4-10, 3/8-14, 3/8-15 the nut, the double cone and the thread A are at the opposite side of the picture.

# 6450

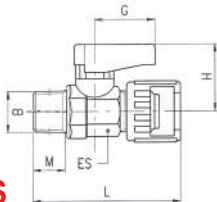
VALVOLA TUBO - TUBO (MANIGLIA STANDARD - PIASTRINA ROSSA)  
TUBE - TUBE VALVE (STANDARD HANDLE - RED PLATE)



Codice Code	D1	D	DN	ES	L	G	H	Conf. Pack.
064500001	6	6	5.5	14-15	46	19	21	25
064500002	6	8	5.5	14-15	48	19	21	25
064500003	8	8	5.5	14-15	48	19	21	25
064500004	10	8	5.5	14-15	51	19	21	25
064500005	10	10	8	18-19	55	19	22	10
064500006	10	12	8	18-19	56	19	22	10
064500007	12	12	8	18-19	57	19	22	10
064500008	14	10	8	18-19	59.5	19	22	10
064500009	14	12	8	18-19	60.5	19	22	10
064500010	15	10	8	18-19	59.5	19	22	10
064500011	15	12	8	18-19	60.5	19	22	10
064500012	14	14	10	22-23	63	26	30.5	10
064500013	15	14	10	22-23	63	26	30.5	10
064500014	15	15	10	22-23	63	26	30.5	10
064500015	16	14	10	22-23	68	26	30.5	10
064500016	16	15	10	22-23	68	26	30.5	10
064500017	18	14	10	22-23	68	26	30.5	10
064500018	18	15	10	22-23	68	26	30.5	10
064500019	18	16	14	28-30	71	50	33	5
064500020	18	18	14	28-30	71	50	33	5

# 6460

VALVOLE DADO CAPETTATO - MASCHIO CONICO R ISO 7 (MANIGLIA STANDARD - PIASTRINA ROSSA)  
MILLED NUT - TAPER MALE R ISO 7 VALVE (STANDARD HANDLE - RED PLATE)

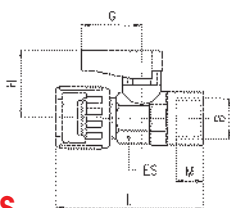


NO GAS

Codice Code	B	DN	ES	M	L	G	H	Conf. Pack.
064600001	1/8	5.5	14-15	7.4	44	19	21	10
064600002	1/4	5.5	14-15	11	49.5	19	21	10
064600003	3/8	8	18-19	11.4	50	19	21	10

# 6470

VALVOLE DADO CAPETTATO - FEMMINA G ISO 228 (MANIGLIA STANDARD - PIASTRINA ROSSA)  
MILLED NUT - FEMALE G ISO 228 VALVE (STANDARD HANDLE - RED PLATE)

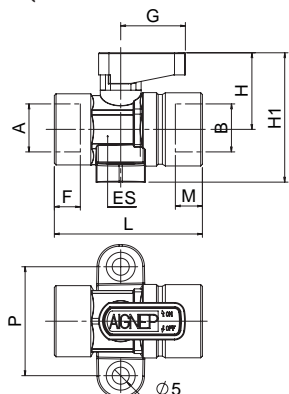


NO GAS

Codice Code	B	DN	ES	M	L	G	H	Conf. Pack.
064700001	1/8	5.5	14-15	7	46	19	21	10
064700002	1/4	5.5	14-15	8	46	19	21	10

# 6490

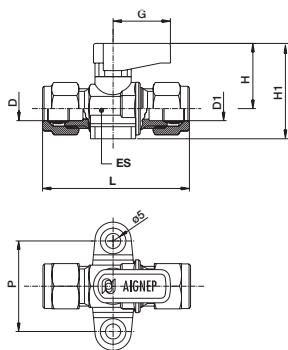
VALVOLA CON PIEDINI D'ANCORAGGIO FEMMINA-FEMMINA (MANIGLIA STANDARD - PIASTRINA ROSSA)  
FOOT MOUNTED FEMALE-FEMALE VALVE (STANDARD HANDLE - RED PLATE)



Codice Code	A	B	DN	ES	L	F	M	G	H	H1	P	Conf. Pack.
064900002	1/4	1/4	5.5	14-15	43.5	8	8	19	21	31.5	30	10
064900003	3/8	3/8	8	18-19	8.5	9	9	19	22	38	32	10

# 6500

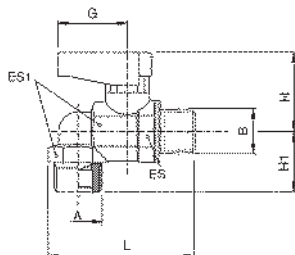
VALVOLA CON PIEDINI D'ANCORAGGIO TUBO-TUBO (MANIGLIA STANDARD - PIASTRINA ROSSA)  
 FOOT MOUNTED TUBE-TUBE VALVE (STANDARD HANDLE - RED PLATE)



Codice Code	D	D1	DN	ES	L	H	H1	G	P	Conf. Pack.
065000001	8	8	5.5	14-15	50	21	32	19	30	10

# 6540

VALVOLA A L MASCHIO CILINDRICO GA ISO 228-MASCHIO CONICO R ISO 7 (MANIGLIA STANDARD - PIASTRINA ROSSA)  
 ELBOW PARALLEL MALE GA ISO 228-TAPER MALE R ISO 7 VALVE (STANDARD HANDLE - RED PLATE)



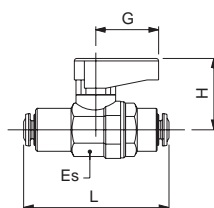
Codice Code	A	B	DN	ES	ES1	L	H	H1	G	Conf. Pack.
065400001	1/4	1/4	5.5	14-15	17	48	21	17	19	10

# 6560

VALVOLA CON ATTACCHI TUBO AUTOMATICI (MANIGLIA STANDARD - PIASTRINA ROSSA)  
 WITH PUSH-IN CONNECTIONS VALVE (STANDARD HANDLE - RED PLATE)



**NO GAS**



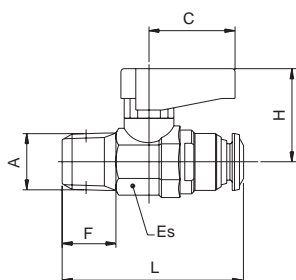
Codice Code	Tubo Tube	Tubo Tube	DN	ES	L	G	H	Conf. Pack.
065600001	4	4	3	14-15	44	19	21	10
065600002	6	6	5	14-15	48	19	21	10
065600003	8	8	5.5	14-15	48	19	21	10
0656000075	10	10	8	18-19	58.5	19	22	10
0656000076	12	12	10	22-23	66	26	30.5	10

# 6570

VALVOLA MASCHIO CONICO R ISO 7 - ATTACCO TUBO AUTOMATICO (MANIGLIA STANDARD - PIASTRINA ROSSA)  
 TAPER MALE R ISO 7- PUSH-FIT CONNECTIONS VALVE (STANDARD HANDLE - RED PLATE)



**NO GAS**



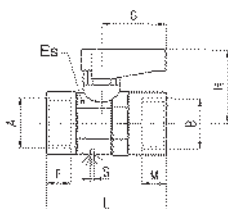
Codice Code	A	Tubo Tube	DN	F	Es	L	C	H	Conf. Pack.
0657000001	1/8	4	3	8.5	14-15	35	19	21	10
0657000002	1/8	6	5	8.5	14-15	40	19	21	10
0657000004	1/8	8	5.5	8.5	14-15	41.5	19	21	10
0657000003	1/4	6	5	12.5	14-15	38.5	19	21	10
0657000005	1/4	8	5.5	12.5	14-15	45.5	19	22	10

# 6600

VALVOLA CON FORO DI SFIATO FEMMINA G ISO 228 (MANIGLIA STANDARD - PIASTRINA ROSSA)  
 EXHAUST HOLE FEMALE G ISO 228 - FEMALE G ISO 228 VALVE (STANDARD HANDLE - RED PLATE)



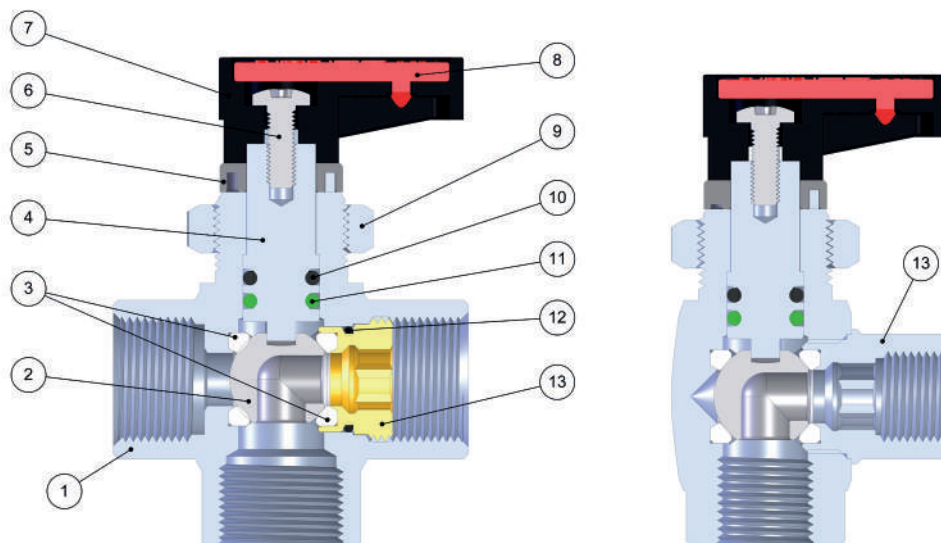
**NO GAS**



Codice Code	A	B	DN	ES	F	M	L	G	H	S	Conf. Pack.
0660000001	1/8	1/8	5.5	14-15	7	7	35	19	21	2.5	10
0660000002	1/4	1/4	5.5	14-15	8	8	37	19	21	2.5	10
0660000003	3/8	3/8	8	18-19	9	9	42	19	22	3	10

## MiniValvola a sfera a tre vie / 3 Ways MiniBall Valve

### Caratteristiche Tecniche / Technical Characteristics



**FKM A RICHIESTA**  
**IF REQUESTED FKM**

### Materiali e Componenti / Component Parts and Materials

- |    |                                    |    |                                    |
|----|------------------------------------|----|------------------------------------|
| 1  | Corpo in Ottone cromato            | 1  | Chrome Nickel-plated Brass Body    |
| 2  | Sfera in Ottone cromato            | 2  | Chrome Nickel-plated Brass Ball    |
| 3  | Guarnizione sede sfera in PTFE     | 3  | PTFE Seat                          |
| 4  | Albero in Ottone cromato           | 4  | Chrome Nickel-plated Brass Spindle |
| 5  | Fermo Maniglia                     | 5  | Stop Handle                        |
| 6  | Vite in acciaio                    | 6  | Steel Screw                        |
| 7  | Maniglietta in PA66 Caricato vetro | 7  | PA66 Glass reinforced Handle       |
| 8  | Piastrina in Resina Acetalica      | 8  | Acetalic resin Plate               |
| 9  | Ghiera per passaparete             | 9  | Bulkhead nut                       |
| 10 | Guarnizione O-RING in NBR 70       | 10 | NBR 70 Seal O-RING                 |
| 11 | Guarnizione O-RING in FKM          | 11 | FKM Seal O-RING                    |
| 12 | Guarnizione O-RING in NBR 70       | 12 | NBR 70 Seal O-RING                 |
| 13 | Ghiera o raccordo in Ottone        | 13 | Brass Fitting                      |

### Pressioni / Pressures

Pressione minima / Minimum Pressure: -0.99 bar (-0.099MPa)  
Pressione massima / Maximum pressure: 20 bar (2 MPa)

### Filettature / Threads

Gas conica conforme ISO 7.1, BS 21, DIN 2999  
Tapered gas in conformity with ISO 7.1, BS 21, DIN 2999.  
Gas cilindrica conforme ISO 228 Classe A  
Parallel gas in conformity with ISO 228 Class A.

### Tubi di collegamento / Connection Tubes

Tubi in rame, tubi metallici in genere, raccorderia varia.  
PA6, PA11, FEP, PTFE. utilizzando l'apposita bussolina di rinforzo art. 10770.

Tubes made in copper, metal in general and various fittings.  
PA6, PA11, FEP, PTFE. with an inside support bush art 10770.

### Temperature / Temperatures

Temperatura minima / Minimum temperature: -20 °C  
Temperatura massima / Maximum temperature: +80 °C

#### Con Guarnizioni FKM / With FKM Seals

Temperatura minima / Minimum temperature: -15 °C  
Temperatura massima / Maximum temperature: +130 °C

### Fluidi compatibili / Fluids

Aria compressa, acqua, oli.  
Compressed air, water, oils.

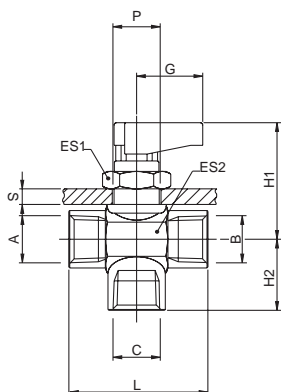


# 6700

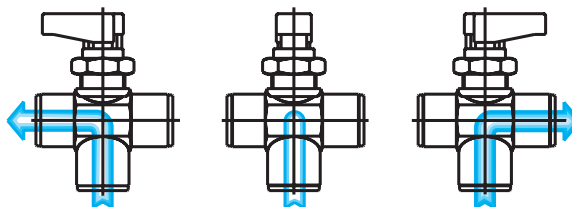
VALVOLA A TRE VIE FEMMINA G ISO 228 (MANIGLIA STANDARD - PIASTRINA ROSSA)  
3 WAYS FEMALE G ISO 228 VALVE (STANDARD HANDLE - RED PLATE)



**NO GAS**



Codice Code	A	B	C	DN	ES1	ES2	L	G	H1	H2	SMax	P	Conf. Pack.
067000001	1/8-1/8-1/8			5	17	17	35	19	33.5	15.5	4.5	14.5	25
067000002	1/4-1/4-1/4			5	17	17	37	19	33.5	17.5	4.5	14.5	25
067000003	3/8-3/8-3/8			7	17	21	42	19	35	19.5	4.5	14.5	10

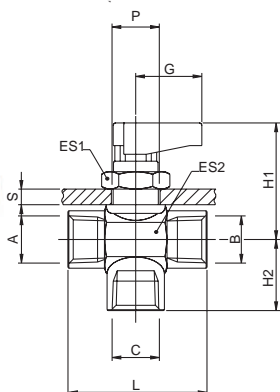


# 6710

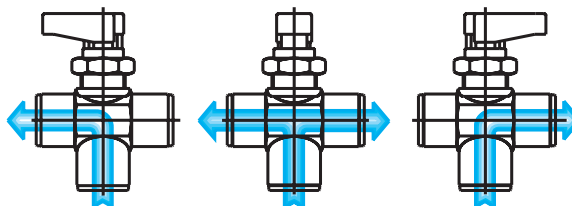
VALVOLA A TRE VIE FEMMINA G ISO 228 (MANIGLIA STANDARD - PIASTRINA ROSSA)  
3 WAYS FEMALE G ISO 228 VALVE (STANDARD HANDLE - RED PLATE)



**NO GAS**



Codice Code	A	B	C	DN	ES1	ES2	L	G	H1	H2	SMax	P	Conf. Pack.
067100001	1/8-1/8-1/8			5	17	17	35	19	33.5	15.5	4.5	14.5	25
067100002	1/4-1/4-1/4			5	17	17	37	19	33.5	17.5	4.5	14.5	25
067100003	3/8-3/8-3/8			7	17	21	42	19	35	19.5	4.5	14.5	10

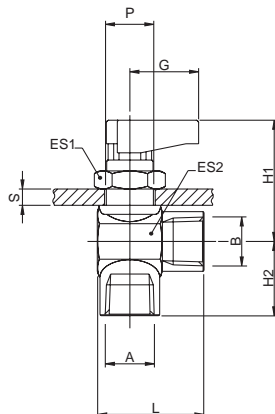


# 6720

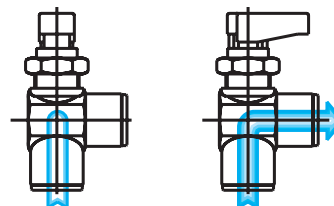
VALVOLA A "L" FEMMINA G ISO 228 (MANIGLIA STANDARD - PIASTRINA ROSSA)  
"L" VALVE FEMALE G ISO 228 VALVE (STANDARD HANDLE - RED PLATE)



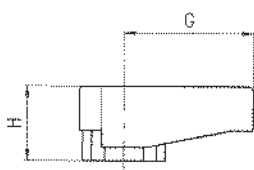
**NO GAS**



Codice Code	A	B	DN	ES1	ES2	L	G	H1	H2	SMax	P	Conf. Pack.
067200001	1/8-1/8		5	17	17	28.5	19	33.5	15.5	4.5	14.5	25
067200002	1/4-1/4		5	17	17	28.5	19	33.5	17.5	4.5	14.5	25
067200003	3/8-3/8		7	17	21	31	19	35	19.5	4.5	14.5	10



# 6900

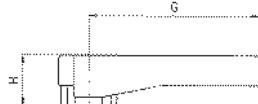
**MANIGLIA CORTA - SHORT HANDLE**


Codice Code	Modello Type	G	H	Conf. Pack.
06900A0300000	<b>A</b>	19	11	25
06900B0300000	<b>B</b>	26	15	25

**A = Per valvole da 1/8, 1/4, 3/8.**      **B = Per valvole da 1/2, 3/4.**  
*A = For valves of 1/8, 1/4, 3/8.*      *B = For valves of 1/2, 3/4.*

**Maniglia CORTA STANDARD per valvola da 1/8-1/4-3/8-1/2**  
**STANDARD SHORT Handle for Valve 1/8-1/4-3/8-1/2**

# 6910

**MANIGLIA LUNGA - LONG HANDLE**


Codice Code	Modello Type	G	H	Conf. Pack.
06910A0300000	<b>A</b>	35	11	25
06910B0300000	<b>B</b>	50	15	25

**A = Per valvole da 1/8, 1/4, 3/8.**      **B = Per valvole da 1/2, 3/4.**  
*A = For valves of 1/8, 1/4, 3/8.*      *B = For valves of 1/2, 3/4.*

**Maniglia LUNGA STANDARD per Valvola da 3/4**  
**STANDARD LONG Handle for Valve 3/4**

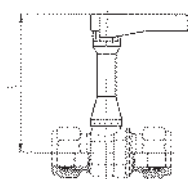
## Prolunga albero di comando / Spindle Extension

Tutti i modelli di valvola a sfera di questa serie possono essere forniti con asta di manovra prolungata (vedi figura). Per l'ordinazione vedi le istruzioni nella pagina "COME ORDINARE" posta all'inizio della serie.

*All the valves "GHILUX" can be supplied with a spindle extension (see the picture). To order use the same instructions mentioned in the previous page "HOW TO ORDER".*



# 6915

**PROLUNGA ALBERO DI COMANDO (CON MANIGLIA LUNGA, VITE)**  
**SPINDLE EXTENSION (WITH LONG HANDLE, SCREW)**


Codice Code	Modello Type	Misura valvola Valve size	L	Conf. Pack.
0691500001	<b>A</b>	1/8	58	10
		1/4	58	
		3/8	59	
0691500002	<b>B</b>	1/2	68	10
		3/4	70	

# 6920

**PIASTRINA COLORATA**  
**COLOURED PLATE**


Codice Code	Modello Type	Colori Colors	Conf. Pack.
06920A03000RO	<b>A</b>	ROSSO / RED	100
06920B03000RO	<b>B</b>	ROSSO / RED	100
06920A03000GI	<b>A</b>	GIALLO / YELLOW	100
06920B03000GI	<b>B</b>	GIALLO / YELLOW	100
06920A03000BL	<b>A</b>	BLU / BLUE	100
06920B03000BL	<b>B</b>	BLU / BLUE	100
06920A03000VE	<b>A</b>	VERDE / GREEN	100
06920B03000VE	<b>B</b>	VERDE / GREEN	100
06920A03000BN	<b>A</b>	BIANCO / WHITE	100
06920B03000BN	<b>B</b>	BIANCO / WHITE	100