

PRESSE PNEUMATICHE

PNEUMATIC PRESSES

Modelli PR

- La nostra serie di presse pneumatiche PR comprende più modelli con una spinta max di 265-3300 daN.
- *Our range of pneumatic presses PR includes more models with a max push of 265-3300 daN.*



Caratteristiche

- Le presse PR e PR RV sono fornite con circuito di sicurezza e comando a due mani. È possibile anche la fornitura di presse pneumatiche senza valvole di controllo.
- La struttura della pressa è in acciaio e l'asta del pistone è guidata da un dispositivo antirotazione.
- La corsa del pistone è completamente regolabile

Characteristics

- *The presses PR and PR RV are equipped with a safety circuit and two hands control. Pneumatic presses without control valves are also available.*
- *The structure of the press is in steel and the rod of the piston is driven by a rotation prevention device.*
- *The stroke of the piston is completely adjustable.*

Modelli PR-RV

- La luce è regolabile con azionamento a volantino e visibile su righello millimetrico.
- Attualmente disponibili in tre versioni:

PR125 RV • PR 125 D RV • PR 160 D RV

Models PR-RV

- *The space is adjustable with handle and is displayed on millimeters ruler.*

- *Available in three versions:*

PR 125 RV • PR 125 D RV • PR 160 D RV



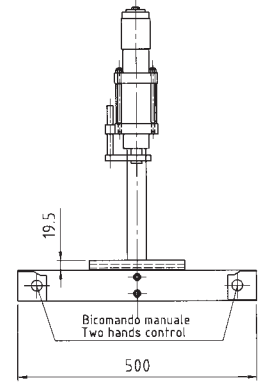
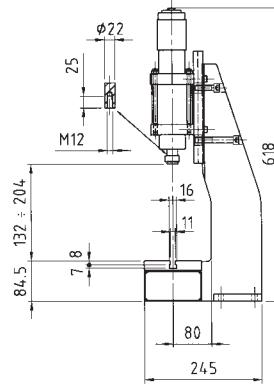
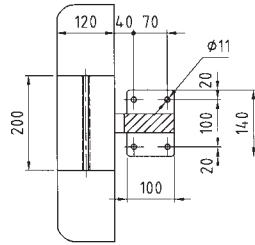
DATI TECNICI / TECHNICAL SPECIFICATIONS

Tipo Type	Forza di spinta teorica a 6 Bar Theoretical pushing power at 6 Bars da N	Luce regolabile Adjustable space mm		Corsa regolabile Adjustable stroke mm	Consumo di aria per 10 mm di corsa a 6 bar Air consumption per 10 mm stroke at 6 bars NI		Velocità Speed mt/min	Pressione alimentazione Supply pressure bar
					Discesa Descent	Salita Rise		
PR 80	265	A	132÷204	0÷50	0,35	0,35	11	3÷6
PR 80 D	530	A	132÷204	0÷50	0,70	0,35	8	3÷6
PR 125	675	A	112÷178	0÷50	0,85	0,85	7	3÷6
PR 125 D	1350	A	112÷178	0÷50	1,70	0,85	5	3÷6
PR 160 D	2200		-	0÷70	2,80	1,40	8,4	3÷6
PR 160 T	3300		-	0÷50	4,20	1,40	8	3÷6
PR 125 RV	675	B	100÷180	0÷50	0,85	0,85	7	3÷6
PR 125 D-RV	1350	B	100÷180	0÷50	1,70	0,85	5	3÷6
PR 160 D-RV	2200	B	120÷210	0÷70	2,80	1,40	8,4	3÷6

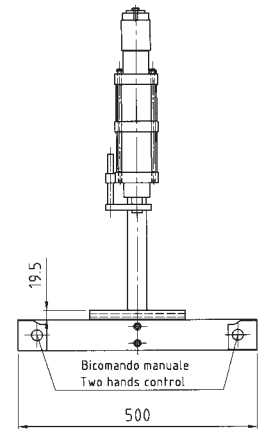
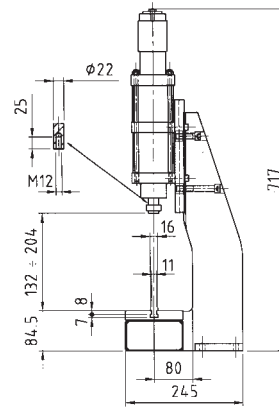
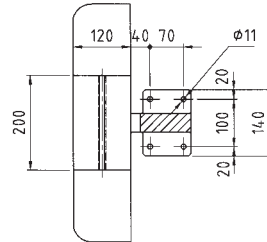
A = Luce regolabile con slitta / Adjustable space with slide
B = Luce regolabile con volantino / Adjustable space with handle

Diritti di modifica riservati
Right of modification reserved

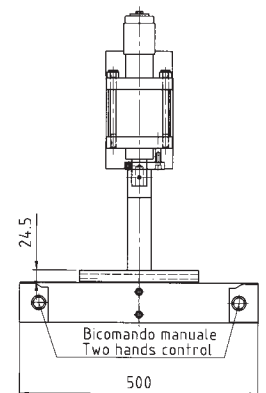
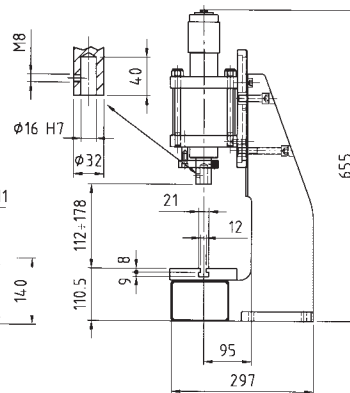
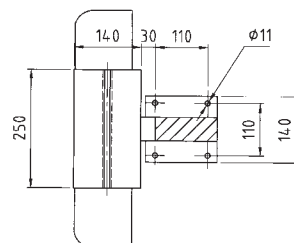
PR 80



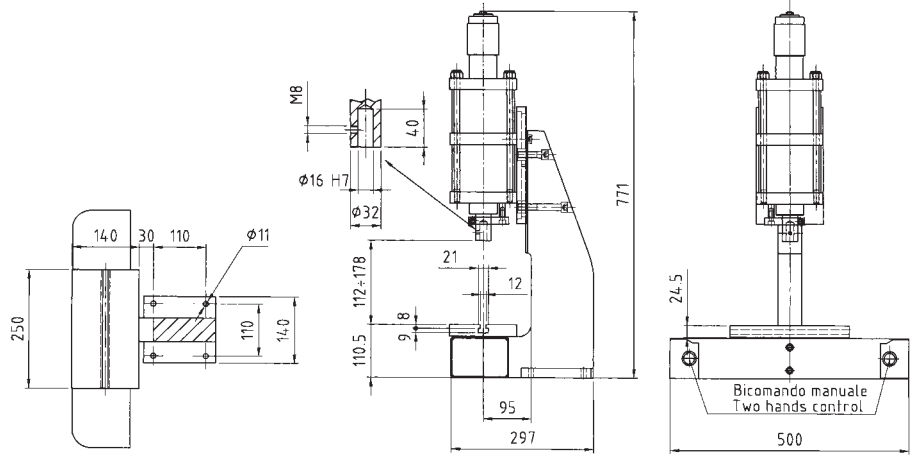
PR 80 D



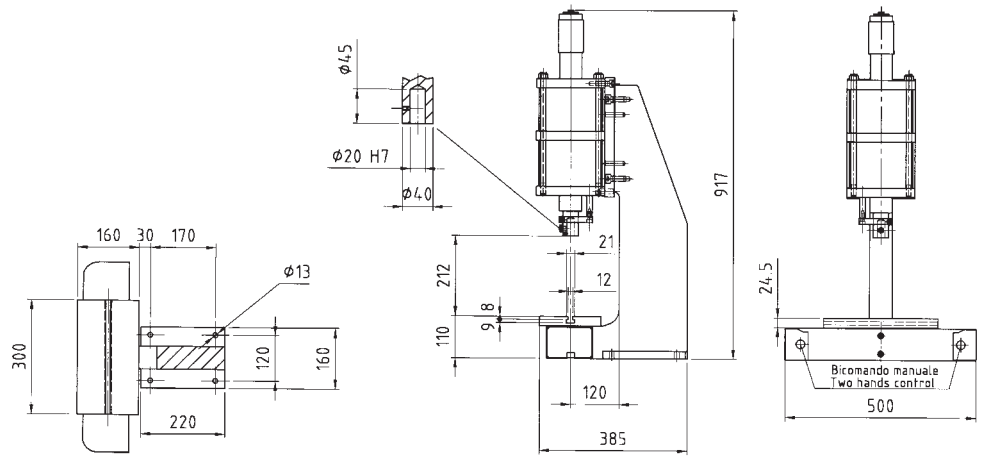
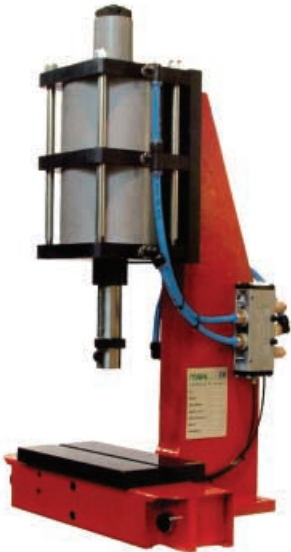
PR 125



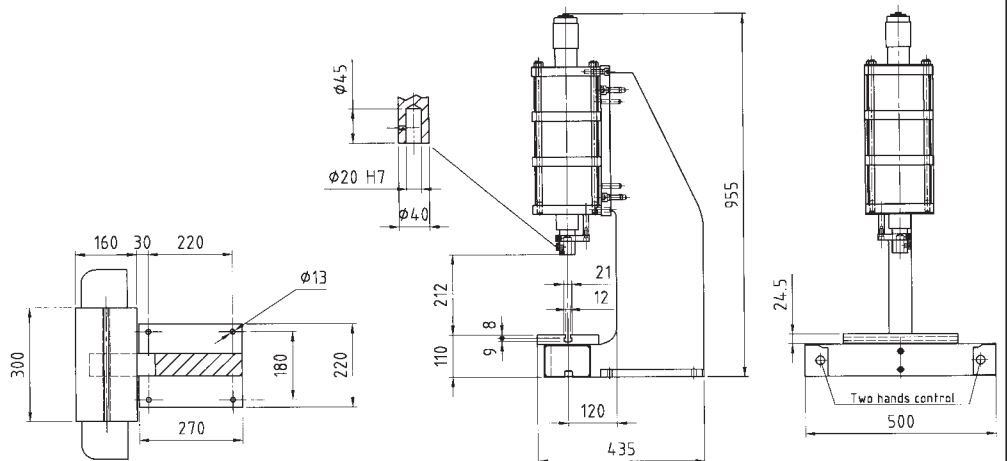
PR 125 D



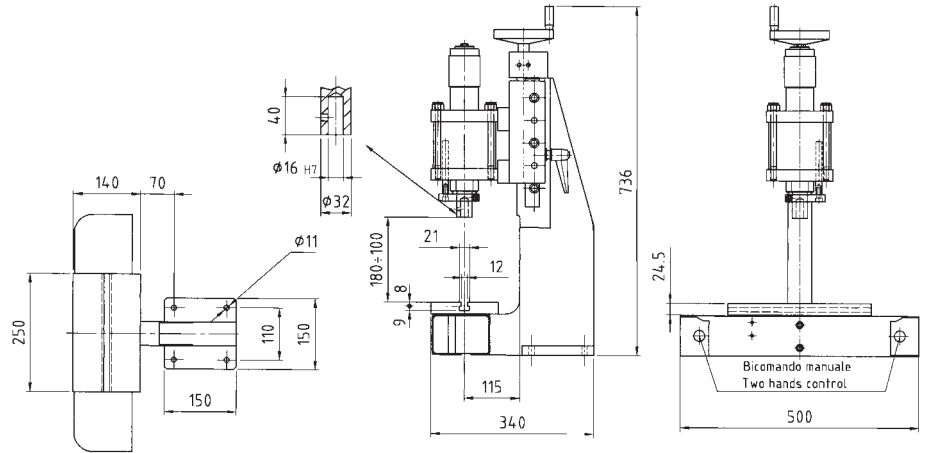
PR 160 D



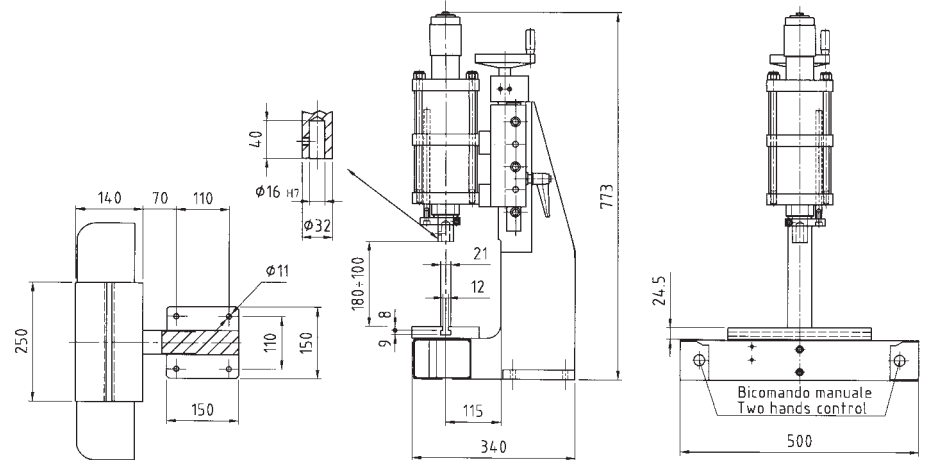
PR 160 T



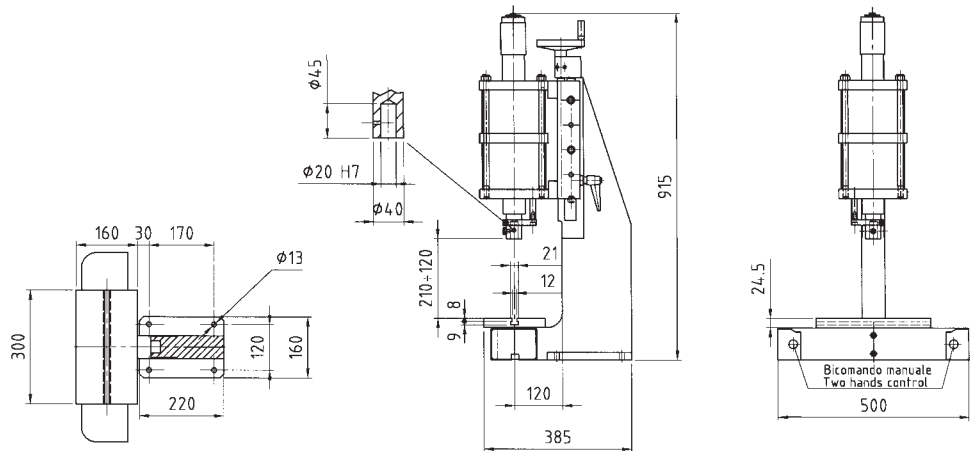
PR 125 RV



PR 125 D RV



PR 160 D RV



IL PROGRAMMA COMPLETO

THE COMPREHENSIVE PROGRAM



Tavole rotanti pneumatiche
Pneumatic rotative tables

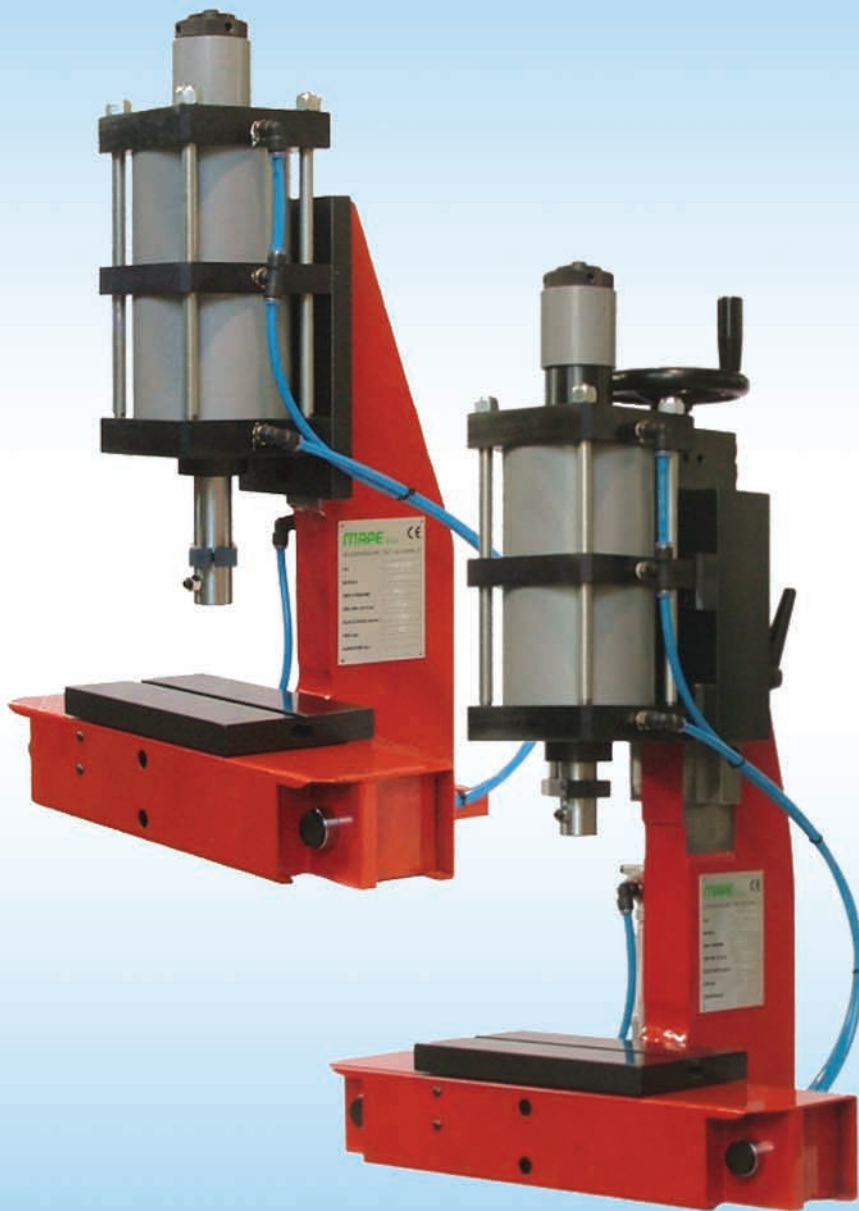


Alimentatori pneumatici
Pneumatic feeders



Presse pneumatiche
Pneumatic presses

PRESSE PNEUMATICHE PNEUMATIC PRESSES



MAPE

IN CONFORMITY WITH
 DIRECTIVE